

Kas

**terratinta** 100%  
ceramiche made in  
Italy



## THIS IS KOS

It's been 12 years since our company was set up, and with Terratinta Ceramiche brand we brought a new way of thinking within the ceramic industry. An iconic style, *#terratintastyle*, which has introduced us as leader in Northern European design.

With **Kos** collection, our aim is to reinforce the idea of our design, made of simplicity, timeless beauty, aesthetics, never giving up on quality and latest technologies available.

A new interpretation within concrete look, minimalist and contemporary, with a new material that offers high-level performances and a style that ranges from architecture to interior design. **Kos** collection comes in 5 colors, with cooler and warmer shades of grey and several sizes, from the small ones to the bigger ones, with full continuity with *#terratintastyle*.

9 years after our renowned Betontech series, **Kos** comes as a new chapter, although we keep on thinking in the same way: simplicity, now as it always has, is priceless.

## QUESTA È KOS

Sono passati 12 anni dalla fondazione della nostra azienda e con il marchio Terratinta Ceramiche abbiamo introdotto un nuovo modo di pensare nel settore ceramico. Uno stile iconico, *#terratintastyle*, che ci ha affermati come leader nel design Nord Europeo.

Con la collezione Kos, il nostro obiettivo è rafforzare l'idea del nostro design, fatto di semplicità, bellezza senza tempo, estetica, che non rinuncia mai alla qualità e alle ultime tecnologie disponibili.

Una nuova interpretazione dell'effetto cemento, minimalista e contemporaneo, con un nuovo materiale che offre prestazioni di alto livello e un'estetica che spazia dall'architettura all'interior design. La collezione Kos è disponibile in 5 colori, con tonalità di grigio più fredde e più calde in diversi formati, dal grande al piccolo, in piena continuità con il nostro *#terratintastyle*.

A 9 anni dalla nostra famosa serie Betontech, Kos si presenta come un nuovo capitolo, nonostante noi continuiamo a pensarla allo stesso modo: la semplicità, ora come sempre, non ha prezzo.



**terratinta** 100% made in Italy  
ceramiche

Leader in North European Design

*minimalist*  
minimalista

*light and pale color palette*  
gamma colori tenui e chiara



*simple*  
semplice

*nature inspired design*  
design ispirato alla natura



*highly functional*  
altamente funzionale

*clean lines*  
linee pulite



*high quality*  
alta qualità

**Simplicity is the ultimate form of sophistication**

*La forma suprema di sofisticazione*

-Leonardo Da Vinci-







CARL HANSEN & SØN  
PASSIONATE CRAFTSMANSHIP

## CARL HANSEN & SØN

The Nordic mood of Terratinta meets the timeless design of  
**Carl Hansen & Søn.**



As the Scandinavian style teaches, Terratinta Ceramiche has always been committed to offer a product that respectfully and harmonically merges itself to the context, and **Kos** collection is the project that best embodies this concept. The neutral colors of Terratinta do not predominate on furnishings or surrounding spaces, but they rather enhance them with discretion and elegance.

It's with these premises that a collaboration with **Carl Hansen & Søn**, one of the most famous and renowned Scandinavian design brands, is born. **Carl Hansen & Søn** is synonymous not only with finest and impeccable quality furnishings and craftsmanship, but also with refined handmade products and a boundless passion for good design.

Each product of the company comes from a meticulous and careful planning, shaped by the work of expert and skilled hands. **Kos** collection, together with the iconic design of **Carl Hansen & Søn**, comes to life becoming a subtle and balanced background.

Two worlds with the same origins and DNA coming together, in the name of timeless beauty and simplicity.

## CARL HANSEN & SØN

Il mood nordico di Terratinta incontra il design senza tempo di **Carl Hansen & Søn.**

Così come insegna lo stile scandinavo, Terratinta Ceramiche si è sempre impegnata per offrire un prodotto che si integri con rispetto ed armonia al contesto e **Kos** è il progetto che rappresenta al meglio questo concept. Le tinte neutre di Terratinta non predominano sugli arredi o gli spazi, ma al contrario li valorizzano con discrezione ed eleganza.

Da queste premesse è nata spontanea la collaborazione con uno dei brand più storici e rinomati del design Scandinavo, **Carl Hansen & Søn.**

**Carl Hansen & Søn** è sinonimo non solo di arredi di altissima qualità e manifattura, ma anche di raffinata artigianalità e indiscussa passione per il buon design. Ogni prodotto dell'azienda nasce da una progettualità attenta e ricercata, plasmata dal lavoro di mani esperte e sapienti. La serie **Kos**, insieme al design iconico di **Carl Hansen & Søn**, prende vita diventando uno sfondo delicato e equilibrato. Un incontro tra due mondi con origini e DNA comuni, nel segno della bellezza e semplicità senza tempo.



## WHY "KOS"

"Kos" in Norwegian. "Hygge" in Danish. "Mys" in Swedish.

These are all words meaning pretty much the same thing. Mostly translated as "feeling of comfort" or "cosiness", they come with a deeper meaning, with roots set deep down within human soul: **Kos** (like Hygge, and Mys) is an elevate state of happiness, it's about feeling safe and content, it's embracing and enjoying togetherness.

With **Kos** collection we wish to all those who choose it for their homes or their projects, to be able to feel it as one of the beautiful "koselig" things of their life, feeling homey and joyful around it over the years.

For us, thinking about it, designing it, producing it and then presenting it, made us feel the whole "**Kos**" meaning!



## PERCHÈ "KOS"

"Kos" in norvegese. "Hygge" in danese. "Mys" in svedese. Queste parole esprimono tutte il medesimo concetto. Tradotte per lo più come "sensazione di conforto" o "intimità", hanno in verità un significato più profondo, con radici ancorate nell'animo umano: **Kos** (come Hygge o Mys) è uno stato di felicità elevato, è una sensazione di sicurezza e benessere, è l'abbracciare e il sentirsi profondamente bene, stando insieme.

Con la collezione **Kos** auguriamo a tutti coloro che la sceglieranno per le loro case o i loro progetti, di poterla percepire come una delle cose "koselig" della loro vita, sentendosi a casa e gioiosi intorno ad essa nel corso degli anni.

Per noi progettare, disegnare, produrre e presentare questa serie è stato indubbiamente "**Kos**"!



# CONTENTS

## INDICE



**-014-**  
Vit



**-026-**  
Sand



**-036-**  
Brun



**-048-**  
MoIn

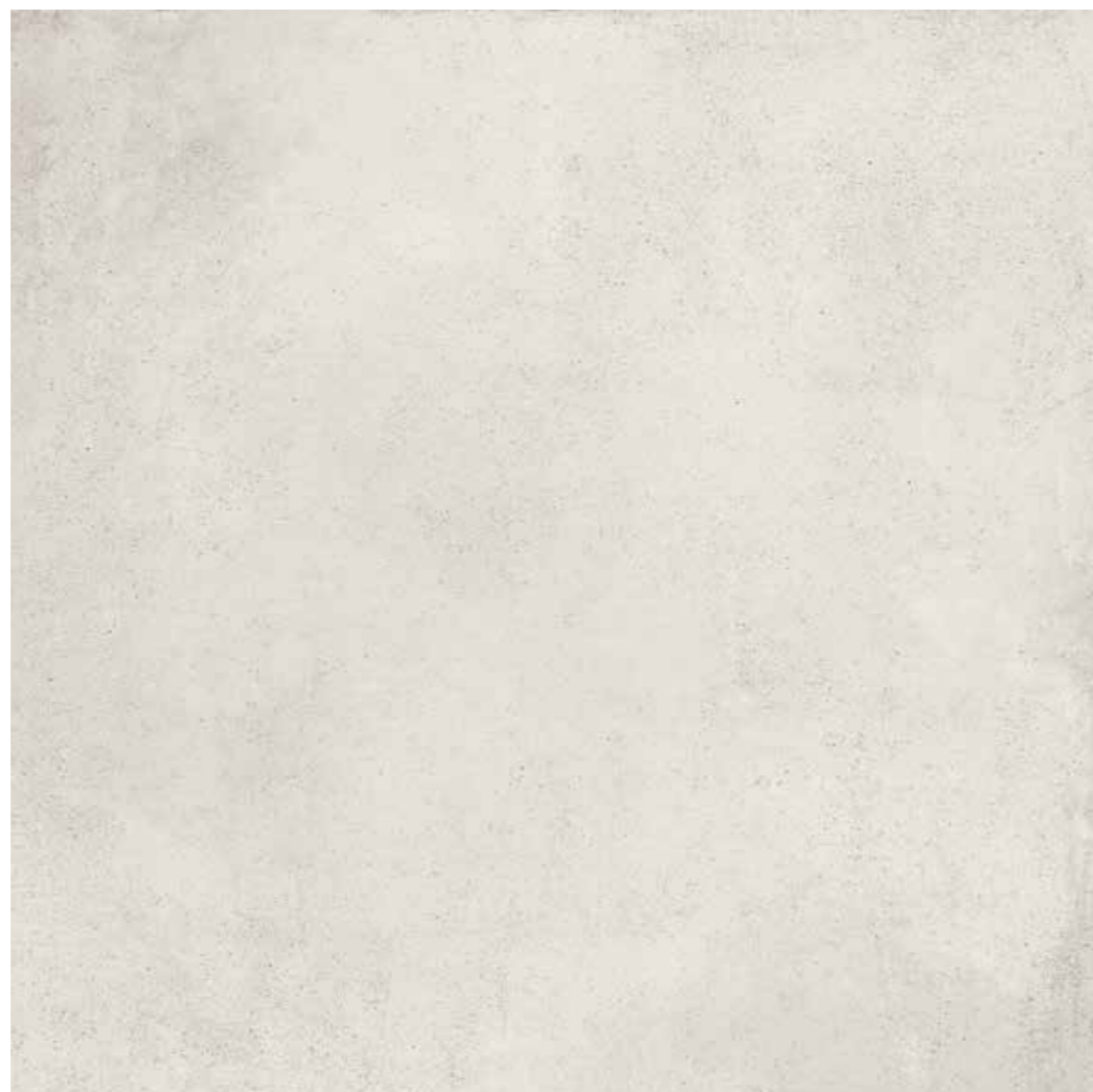


**-062-**  
Antracit

**-070-**  
Slabs technical info  
Informazioni  
tecniche lastre

**-074-**  
Packaging  
Imballi

**-075-**  
Technical features  
Caratteristiche  
tecniche



**VIT**

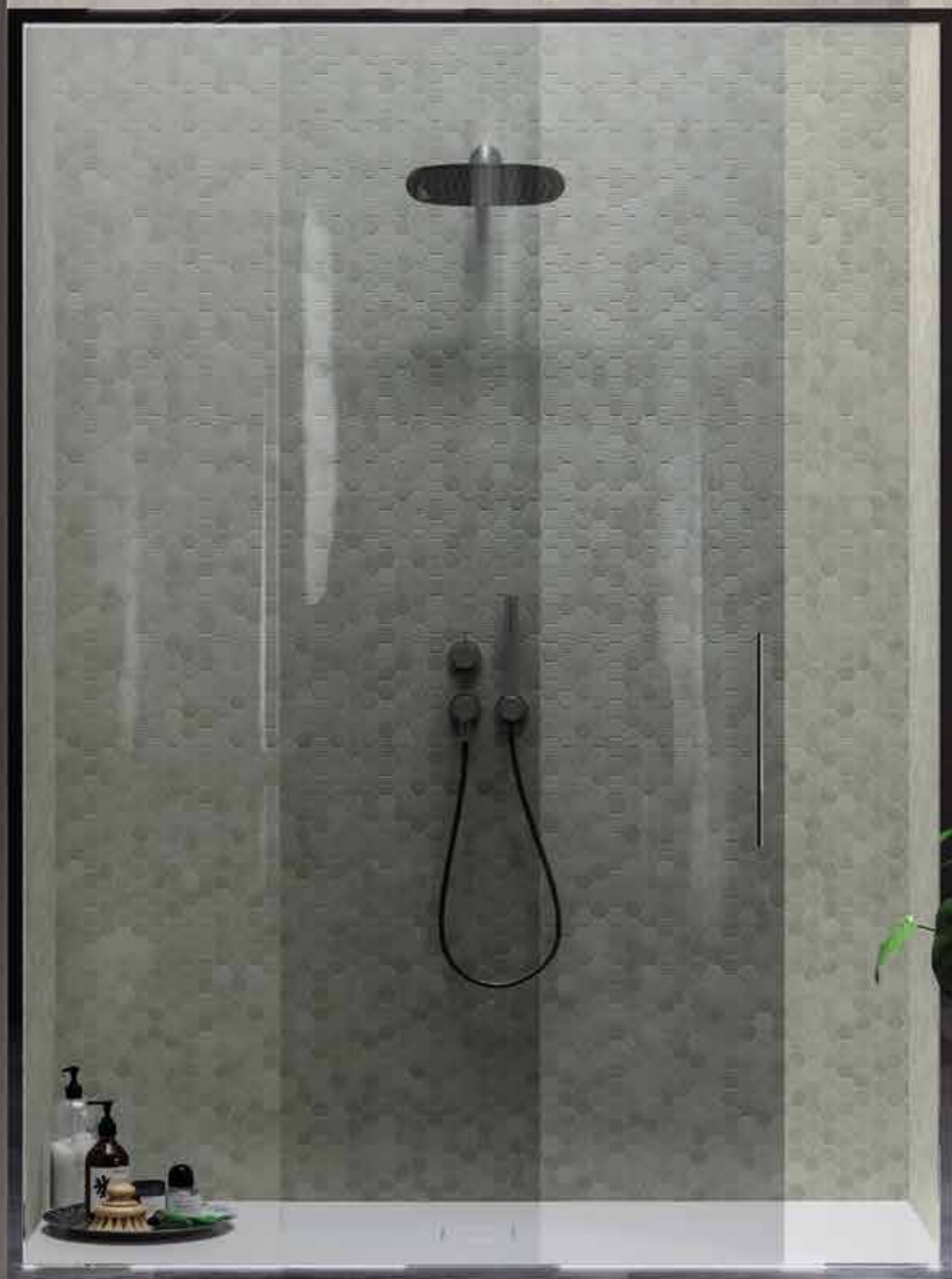
---



**Moln** 90x90cm matt wall  
**Vit** 60x60cm matt floor



**Vit 60x60cm matt wall**  
**Hexa Wild Sage mosaic 31,6x31,6cm mix matt/glossy/fabric wall**  
**Antracit 90x90cm matt floor**





Hexa Wild sage mosaic 31,6x31,6cm mix matt/glossy/fabric wall  
Antracit 90x90cm matt floor





Vit 90x90cm ultra matt floor



 **V2**

graphic development 90x90  
sviluppo grafico 90x90

## AVAILABLE SIZES

### FORMATI DISPONIBILI

rectified and modular | *rettificati e modulari*

± 10mm

± 6mm

± 20mm

**120x260**  
matt *Light 6mm*

**mosaic 30x30 (3x3)**  
matt | ultra matt

**120x120**  
matt *Light 6mm*

**60x120**  
matt *Light 6mm*

**mosaic 30x60**  
matt

**90x90**  
matt | ultra matt

**freccia mosaic 3D 30x30**  
matt

*\*THICK20MM ultra matt for Vit and Moln color only  
solo per i colori Vit e Moln*

**45x90**  
matt

**skirting 5x60**  
matt

**60x60\***  
matt | ultra matt

**skirting 5x90**  
matt

*\*THICK20MM ultra matt for Brun and Moln color only  
solo per i colori Brun e Moln*

**30x60**  
matt | ultra matt

**step 30x60**  
matt

**20x60**  
matt

**step tread 34x90**  
matt

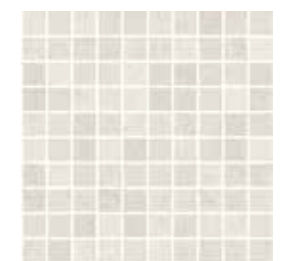
**10x60**  
matt

**10x10**  
matt glue dot\*  
*punto colla\**

*\*30x30cm sheet foglio*



freccia mosaic 3D 30x30



mosaic 30x30 (3x3)

# VIT

*Light 6mm*

120x260  
matt



120x120  
matt



60x120  
matt



V2

graphic development 120x260  
sviluppo grafico 120X260

Grained Green Copper 120x120cm matt wall  
Libeccio Naturale 20x120cm <sup>ceramica</sup> **magica** matt wall  
Sand 120x120cm *Light* matt floor





**SAND**



**Sand** 90x90cm matt floor  
Carl Hansen & Søn: CH24 wishbone chair , CH25 Lounge Chair



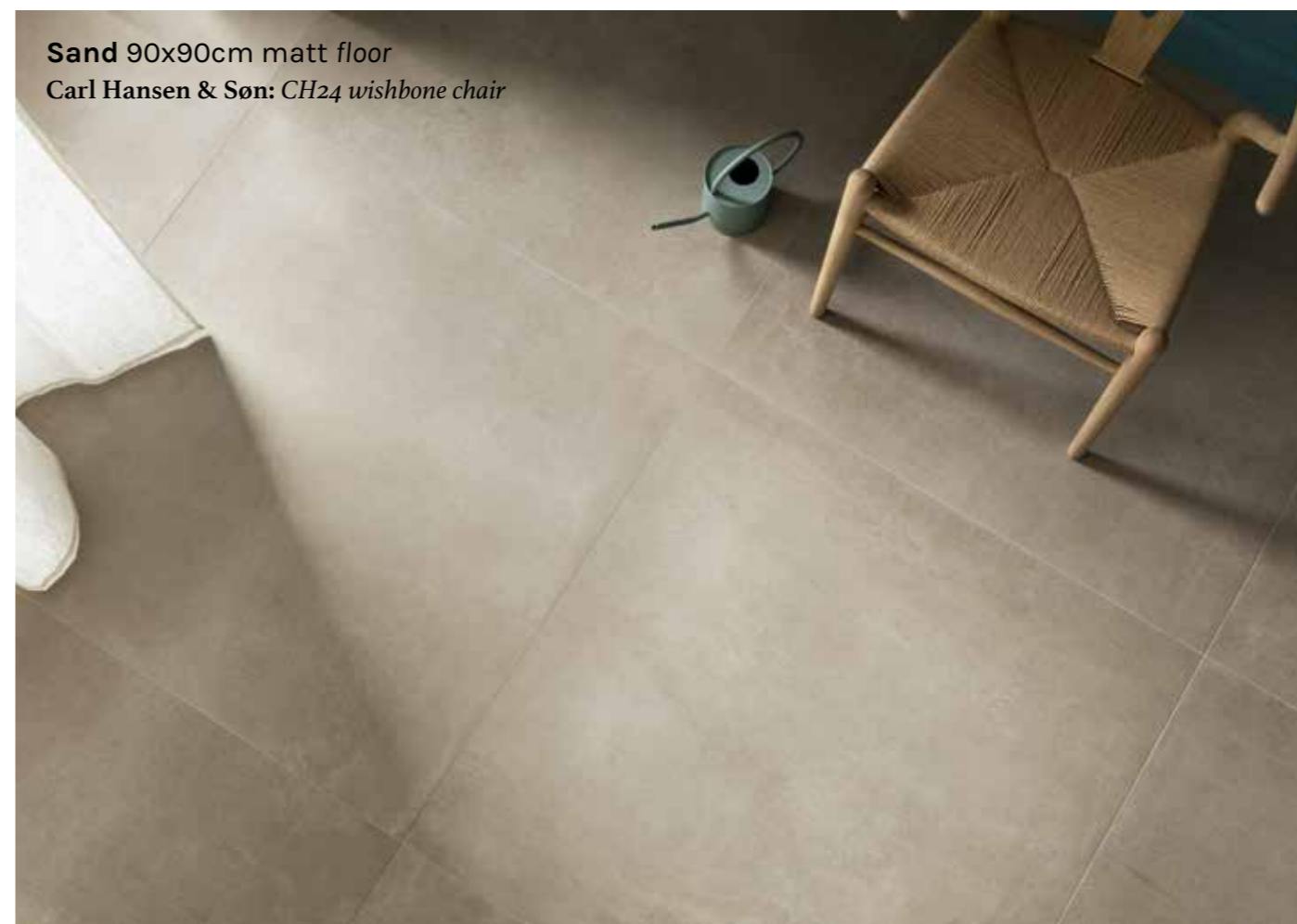
**Sand 90x90cm matt floor**

**Carl Hansen & Søn: CH24 wishbone chair**

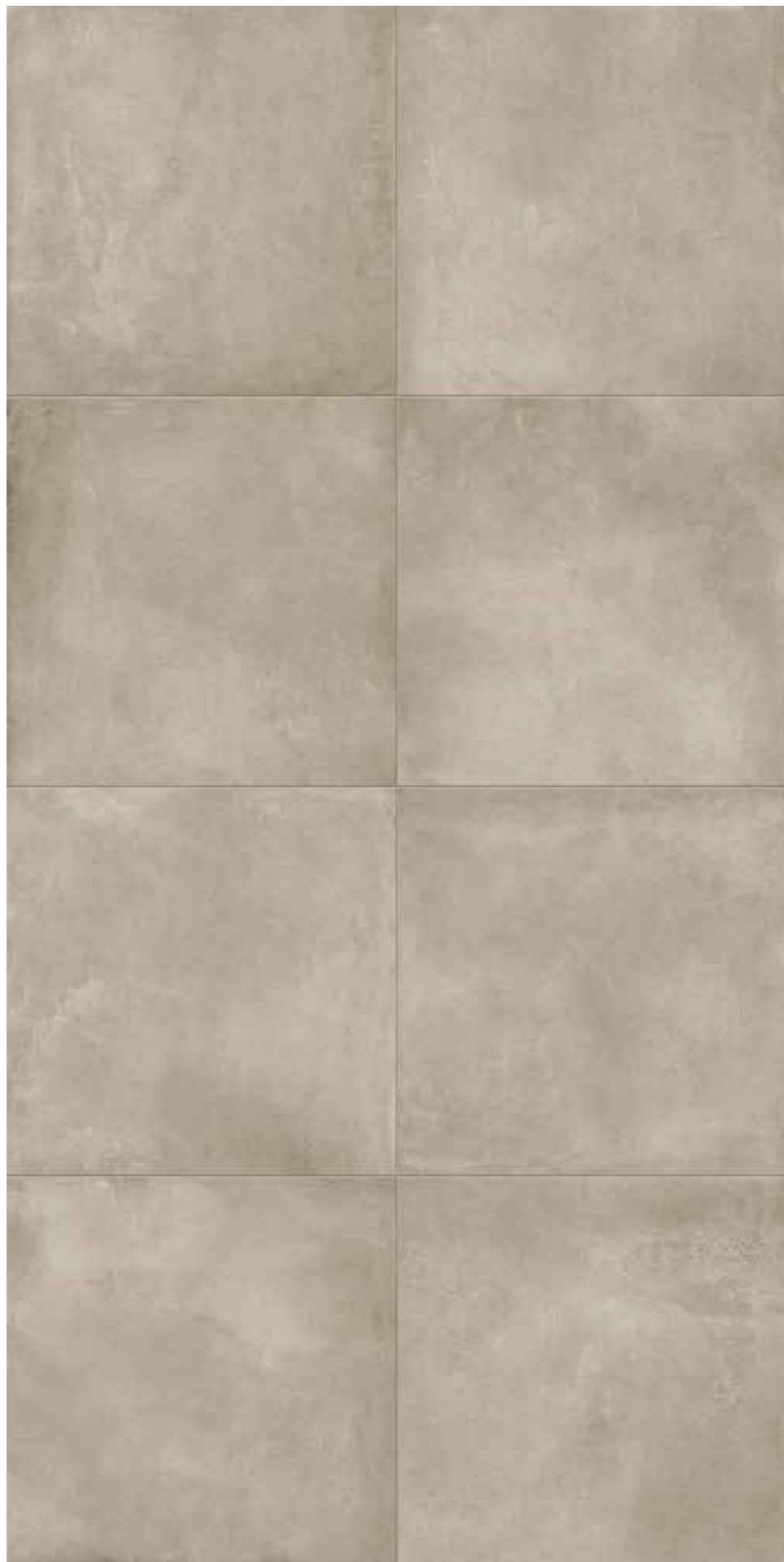


**Sand 90x90cm matt floor**

**Carl Hansen & Søn: CH24 wishbone chair**







V2

graphic development 90x90  
sviluppo grafico 90x90

## AVAILABLE SIZES

### FORMATI DISPONIBILI

rectified and modular | *rettificati e modulari*

± 10mm

± 6mm

± 20mm

**120x260**  
matt *Light 6mm*

**mosaic 30x30 (3x3)**  
matt | ultra matt

**120x120**  
matt *Light 6mm*

**60x120**  
matt *Light 6mm*

**mosaic 30x60**  
matt

**90x90**  
matt | ultra matt

**freccia mosaic 3D 30x30**  
matt

**45x90**  
matt

**skirting 5x60**  
matt

**60x60\***  
matt | ultra matt

**skirting 5x90**  
matt

*\*THICK20MM ultra matt for Brun and Moln color only  
solo per i colori Brun e Moln*

**30x60**  
matt | ultra matt

**step 30x60**  
matt

**20x60**  
matt

**step tread 34x90**  
matt

**10x60**  
matt

**10x10**  
matt glue dot\*  
*punto colla\**

*\*30x30cm sheet foglio*



freccia mosaic 3D 30x30



mosaic 30x30 (3x3)

# SAND

*Light 6mm*

120x260  
matt



120x120  
matt



60x120  
matt



V2

graphic development 120x260  
sviluppo grafico 120X260

Sand 120x260cm *Light* matt floor





**BRUN**



**Brun 90x90cm matt floor**  
Carl Hansen & Søn: *CH07 Shell Chair*

Brun 90x90cm matt floor  
Carl Hansen & Søn: CH07 Shell Chair



Brun 90x90cm matt floor  
Carl Hansen & Søn: *CH07 Shell Chair*



Brun 90x90cm matt floor



V2



graphic development 90x90  
sviluppo grafico 90x90

## AVAILABLE SIZES

### FORMATI DISPONIBILI

rectified and modular | *rettificati e modulari*

± 10mm

± 6mm

± 20mm

**120x260**  
matt *Light 6mm*

**mosaic 30x30 (3x3)**  
matt | ultra matt

**120x120**  
matt *Light 6mm*

**60x120**  
matt *Light 6mm*

**mosaic 30x60**  
matt

**90x90**  
matt | ultra matt

**freccia mosaic 3D 30x30**  
matt

**45x90**  
matt

**skirting 5x60**  
matt

**60x60\***  
matt | ultra matt

**skirting 5x90**  
matt

*\*THICK20MM ultra matt for Brun and Moln color only  
solo per i colori Brun e Moln*

**30x60**  
matt | ultra matt

**step 30x60**  
matt

**20x60**  
matt

**step tread 34x90**  
matt

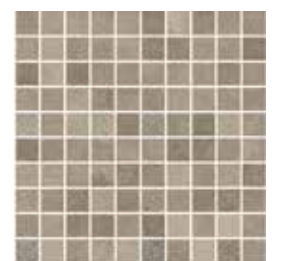
**10x60**  
matt

**10x10**  
matt glue dot\*  
*punto colla\**

*\*30x30cm sheet foglio*



freccia mosaic 3D 30x30



mosaic 30x30 (3x3)

# BRUN

*Light 6mm*

120x260  
matt



120x120  
matt



60x120  
matt



V2

graphic development 120x260  
sviluppo grafico 120X260



Brun 120x260cm *Light* matt wall



Brun 60x60cm ultra matt floor





**MOLN**



**Moln 90x90cm matt floor**  
**Carl Hansen & Søn: E005 Embrace Chair**

Moln 90x90cm matt floor  
Carl Hansen & Søn: E005 Embrace Chair



Hexa Wall Ocean Wave 17,3x15cm glossy wall  
Moln 60x60cm matt floor





Moln 90x90cm ultra matt floor

V2



graphic development 90x90  
sviluppo grafico 90x90

## AVAILABLE SIZES

### FORMATI DISPONIBILI

rectified and modular | *rettificati e modulari*

± 10mm

± 6mm

± 20mm

**120x260**  
matt *Light 6mm*

**mosaic 30x30 (3x3)**  
matt | ultra matt

**120x120**  
matt *Light 6mm*

**60x120**  
matt *Light 6mm*

**mosaic 30x60**  
matt

**90x90**  
matt | ultra matt

**freccia mosaic 3D 30x30**  
matt

*\*THICK20MM ultra matt for Vit and Moln color only  
solo per i colori Vit e Moln*

**45x90**  
matt

**skirting 5x60**  
matt

**60x60\***  
matt | ultra matt

**skirting 5x90**  
matt

*\*THICK20MM ultra matt for Brun and Moln color only  
solo per i colori Brun e Moln*

**30x60**  
matt | ultra matt

**step 30x60**  
matt

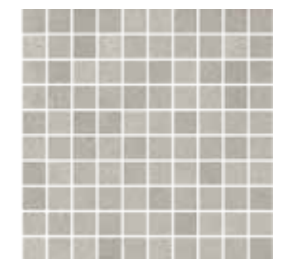
**20x60**  
matt

**step tread 34x90**  
matt

**10x60**  
matt



freccia mosaic 3D 30x30



mosaic 30x30 (3x3)

**10x10**  
matt glue dot\*  
*punto colla\**

*\*30x30cm sheet foglio*

# MOLN

*Light 6mm*

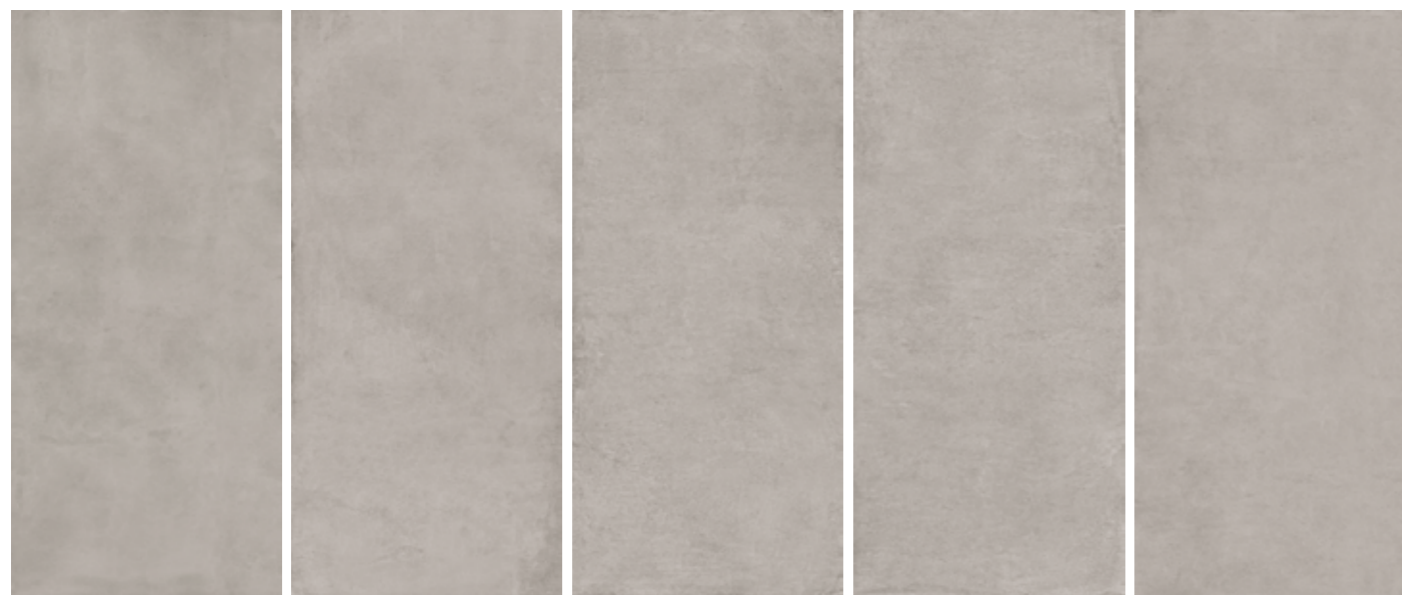
120x260  
matt



120x120  
matt



60x120  
matt



V2

graphic development 120x260  
sviluppo grafico 120x260





**Moln** 60x60cm ultra matt floor



**ANTRACIT**



**Antracit 90x90cm matt floor**





V2



graphic development 90x90  
sviluppo grafico 90x90

## AVAILABLE SIZES

### FORMATI DISPONIBILI

rectified and modular | rettificati e modulari

± 10mm

± 6mm

± 20mm

**120x260**  
matt *Light 6mm*

**mosaic 30x30 (3x3)**  
matt | ultra matt

**120x120**  
matt *Light 6mm*

**60x120**  
matt *Light 6mm*

**mosaic 30x60**  
matt

**90x90**  
matt | ultra matt

**freccia mosaic 3D 30x30**  
matt

**45x90**  
matt

**skirting 5x60**  
matt

**60x60\***  
matt | ultra matt

**skirting 5x90**  
matt

*\*THICK20MM ultra matt for Brun and Moln color only  
solo per i colori Brun e Moln*

**30x60**  
matt | ultra matt

**step 30x60**  
matt

**20x60**  
matt

**step tread 34x90**  
matt

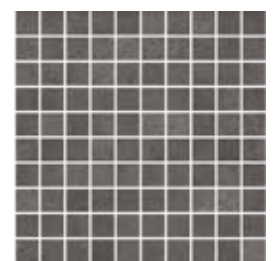
**10x60**  
matt

**10x10**  
matt glue dot\*  
*punto colla\**

*\*30x30cm sheet foglio*



freccia mosaic 3D 30x30



mosaic 30x30 (3x3)

# ANTRACIT

*Light 6mm*

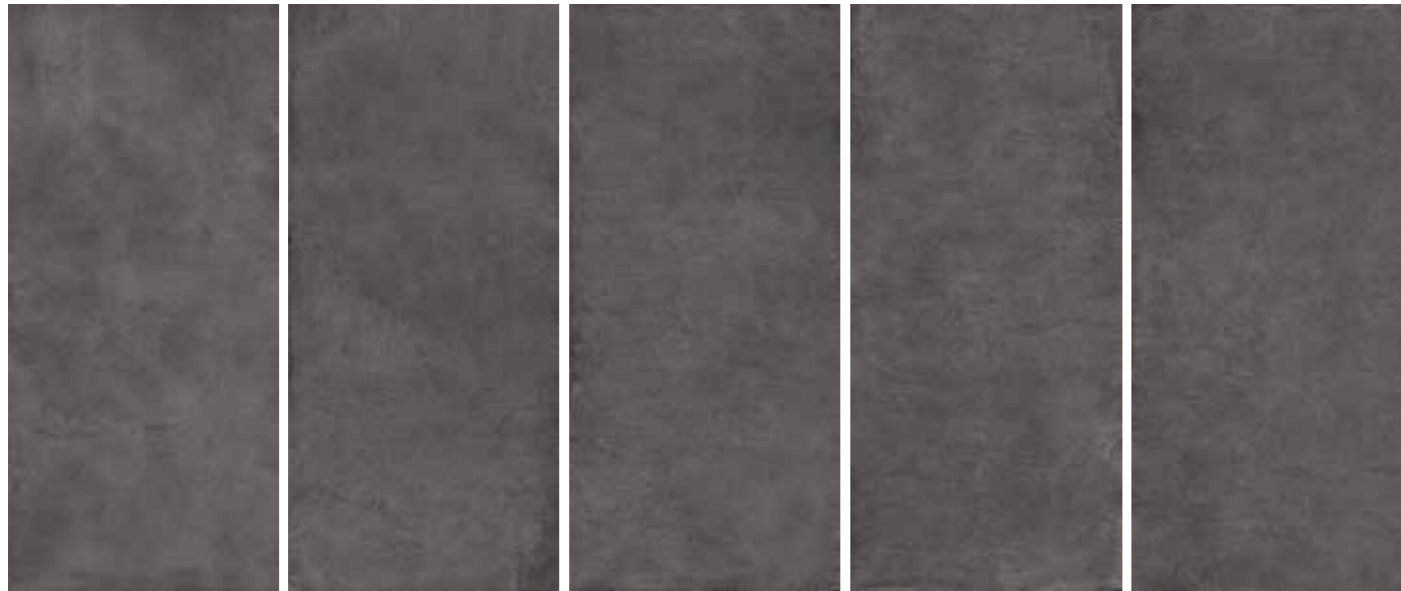
120x260  
matt



120x120  
matt



60x120  
matt



V2

graphic development 120x260  
sviluppo grafico 120x260

Antracit 120x260cm *Light* matt floor



## SLABS TECHNICAL INFO

*Light 6 mm*



### 1\_PACKAGING

Special packaging has been developed to store and transport large tiles safely. Large tiles, whether all the same size or in different sizes, are loaded into crates. All packages are dispatched full or according to individual order requests.

**IT IS RECOMMENDED TO MOVE THE CRATES ONE AT A TIME.**

#### Crate for 120x260

Cm 275 x 136 h 28, • Kg per tile 44 • tile per crate 20 • Sqm per crate 62,40  
• Kg per full crate 880 • Stockability max 10 pallets in warehouse

#### Crate for 120x120

Cm 130 x 130 x h 58 • Kg per tile 20,30 • tile per crate 50 • Sqm per crate 72  
• Kg per full crate 1015 • Stockability max 4 pallets in warehouse

#### Crate for 60x120

Cm 129 x 69 x h 58 • Kg per tile 10,15 • tile per crate 48 • Sqm per crate 34,46  
• Kg per full crate 522 • Stockability max 4 pallets in warehouse

### 2\_MOVING PACKAGES

#### Long side

This is the best option. Use forks at least 1.4 m long, set to the width that provides the best possible support for the package.

#### Short side

Use forks at least 2.1 m long, set to the width that provides the best possible support for the package.

#### LOADING TRUCKS AND CONTAINERS

To load packages into a container, you can either use a fork lift or load from the ground using ramps of suitable height.

Use straps, ties and airbags to keep the material secure during transport. When loading, always make sure that weight is distributed evenly to avoid displacement during transport. Loading calculations must always take account of transport weight limits.

#### ARRANGEMENT FOR LOADING ON CONTAINERS

##### SIZE 120x260

CONTAINER 20': 12 CRATES

CONTAINER 40': 24 CRATES - PAY ATTENTION TO MAXIMUM GROSS WEIGHT

##### SIZE 120x120

CONTAINER 20': 12 CRATES

CONTAINER 40': 27 CRATES - PAY ATTENTION TO MAXIMUM GROSS WEIGHT

##### SIZE 60x120

CONTAINER 20': 24 CRATES

CONTAINER 40': 54 CRATES - PAY ATTENTION TO MAXIMUM GROSS WEIGHT

### 3\_MOVING LARGE TILES ON SITE

#### ON-SITE EQUIPMENT

It is important to use suitable equipment to move large tiles on site.

##### Suction cups

Use vacuum pump suction cups on non-smooth or textured surfaces to ensure a firm grip during manual movement (120x120cm).

Use non-marking rubber suction cups on light coloured surfaces.

##### Suction cup bars or lifting frames with cross-bars

Applying this type of lifting device to large tiles improves rigidity and permits completely safe transport on tile trolleys (120x260cm).

##### Reinforced trolley

We recommend the use of reinforced trolleys to move tiles around large sites and to move tiles in which holes, cutouts or cuts have been made to permit the passage of electrical cables or water pipes.

##### Work bench with aluminium profiles

Use a work bench with aluminium profiles to support the tiles you need to work on practically and safely. Install the work bench on a stable and level surface. Suitable for 60x120, 120x120, 120x260cm.

#### MOVING TILES BY HAND ON SITE

To ensure operator safety, always move large tiles one at a time. At least two people are needed to move each tile, and more may be needed

depending on the weight of the tile.

Manual tile lifting kits include single suction cups for 120x120cm tiles or suction cup frames for tiles of 120x260cm and above.

##### Single suction cups

Use suction cups with individual handles only to lay a small number of tiles in ground level areas that are easily accessible and provide plenty of room for manoeuvre. Attach the suction cup to the centre of the tile to ensure good balance when moving it.

##### Suction cup frames

Place the frame over the centre of the tile so that the ends of bars touch the walls of the crate. To stop the edges of the tile coming into contact with the floor, adjust the end hooks to leave a small gap between the tile and the floor.

### 4\_WORKING ON LARGE TILES

Accurate cuts, shapes, cutouts and holes can be made by specialist tile workshops and processing centres using cutting discs, CNC systems, water jets and other professional equipment.

Simple jobs can be completed on site, but special attention is needed during both movement and working.

A bench of suitable size, with aluminium support profiles is ideal for cutting and drilling jobs.

##### CNC MACHINING (OFF-SITE)

CNC machines can perform high-precision operations on large tiles, including the forming of sink surrounds.

##### WATER JET MACHINING (OFF-SITE)

Water jet machines can be used for various operations including cutting, shaping and hole formation, with accurately formed corners and edges and correct final chamfering.

##### EDGE FINISHING (OFF-SITE)

Automatic machines and special tools are required to finish edges. All kinds of edge should be finished using a cutter and an edge chamfering tool.

The minimum width of straight edges is 2 mm.

The minimum radius of rounded edges is 2 mm.

#### HOLES

Holes for accessories, taps, fittings and electrical cables must be at least 5 cm away from the edge of the tile. The minimum corner radius of internal cutouts must be 5 mm. Outside edges should always be chamfered for maximum strength.

Instructions:

1. Position the large tile on a stable, clean and flat work bench. Keep the finished surface facing up.
2. Start the work using a diamond disc mounted on an angle grinder or drill (normal mode, not hammer). Cut the tile at an angle of about 75°.
3. Gently oscillate the tool to complete the hole. Keep the cutting disc wet to avoid overheating. Use a diamond countersink to make holes that will remain visible.
4. On completion of work, clean the area thoroughly.

#### STRAIGHT CUTS

Use a cutting guide to align the cutting tool. Only use diamond cutting discs that are designed for porcelain tile and suitable for use on the machine in question. Discs must be water cooled and speed reduced at the beginning and end of the cut. Adjust rotation and feed speed to suit the dimensions of the disc and the nature of the cut. To obtain 'L' shapes, make straight cuts first and then drill a hole at the corner.

#### MANUAL STRAIGHT CUTS

Position the large tile you need to cut on a stable work bench of suitable size. Use a cutting guide to align a tungsten carbide cutting tool over the line to be cut.

Instructions:

1. Lower the bar and cutting wheel on to the line to be cut.
2. Cut the ends of the tile for about 5 cm, working from the inside towards the outside.
3. Complete the cut without stopping and at constant speed and pressure.
4. Move the tile so that the line of the cut protrudes about 10-15 cm from the bench.
5. Break off one of the two ends with a pincers. Again using a pincers, apply gentle pressure to the other end to detach the entire section along the cutting line. Two people are needed for this job to avoid the cut section falling and breaking.
6. Remove the cutting guide and smooth the remaining sharp edge of the tile with a diamond pad or resin grinder.

#### MANUAL CURVED CUTS

Position the large tile you need to cut on a stable work bench of suitable size. Use a cutting guide to align a tungsten carbide cutting tool over the line to be cut.

Instructions:

1. Mark out the cutting line with a pencil.
2. Use an angle grinder with a suitable cutting disc to cut the tile along the marked line.

#### RECTANGULAR CUTOUTS

'L' or 'C' shaped cutouts may be required:

- on the edge of a tile, near corners or columns
- in the centre of a tile, to fit accessories, taps, electrical equipment, sinks, hobs, etc. Cutouts must be positioned at least 5 cm from the edge of the tile and from other holes.

Instructions:

1. Position the large tile on a stable, clean and flat work bench. Keep the finished surface facing up.
2. Mark the outline of the cutout.
3. Use a drill in normal (not hammer) mode with a diamond bit or an angle grinder with a cutting disc of 6-8 mm in diameter. Proceed to make circular holes at the inside corners of the marked cutout. The cutting tool must be cooled continuously.
4. Complete the cutout using an angle grinder with a small diameter (max. 125 mm) diamond disc to cut along the straight edges.

### 5\_PREPARING THE SURFACE AND APPLYING ADHESIVE

Before applying adhesive, make sure that the back of the tile is perfectly clean and free from ceramic powder and engobe.

Make all necessary 45° corner tile cuts before applying adhesive.

## SLABS TECHNICAL INFO

*Light 6 mm*

To clean the tiles, use a sponge damped in a water and detergent solution.

The adhesive must cover the entire surface and be of uniform thickness.

To achieve this condition use the technique of double application.

Apply adhesive in straight lines parallel with the short side of the tile.

This permits air to escape more easily. Start by applying adhesive to the back of the tile using a square toothed spatula with teeth no smaller than 3 mm. Proceed parallel with the short side of the tile, taking care to cover the entire back of the tile, including the corners. Now apply adhesive to the substrate using a slant ridge spatula with teeth of at least 10 mm, proceeding in the same direction as for the back of the tile and taking care not to leave any area uncovered. Facing tiles should be applied with the aid of an additional mechanical support.

Use a class C2-S1/S2 adhesive on floors. For walls, use a class T adhesive with reduced vertical slip. Always choose the type of adhesive best suited to the substrate.

### 6\_INSTALLATION

Before you start installing tiles, make sure that the lot is of sufficient quantity and of the right colour and thickness. Follow all the rules and precautions necessary for correct installation. Prepare the substrate, ensure the correct composition of mortars or adhesives, respect specified drying times, expansion joint positions and beating methods, etc.

#### Installing tiles with adhesives

Tiles must be installed by qualified persons using suitable equipment. Installation should always be performed under good lighting conditions.

The choice of adhesive depends on the type of tile (material and size), the substrate to be covered and the use to which the tile will be subject.

Check that the material has been correctly installed before the adhesive dries completely, so that minor corrections can be made if necessary.

#### Installing tiles with fresh mortar

The use of fresh, cement-based mortar or “thick-bed” mortar is not recommended for tile sizes with long sides of over 30 cm or for non-absorbent substrates.

Instructions:

1. Check that the substrate (screed) is hard enough, clean, free from cracks and smooth, with a maximum variation in level of 1 mm/2 metres.
2. First apply adhesive to the tile and substrate, then lift the tile and, with great care and using suitable moving equipment, lay it gently on the adhesive of the substrate. Once in place, the tile cannot be lifted again, and position adjustments are restricted to a maximum of 4-5 cm.
3. Use a manual or electric, anti-bounce tile beater to beat the tile, working from the centre outwards and in straight lines. This ensures maximum adhesion between the tile/adhesive/substrate and facilitates the elimination of air. Remove any adhesive forced out from the joints to keep them free for grouting.
4. Place spacers around the edges of contact with other tiles to form a joint of at least 2 mm.
5. Position the tiles one after another, moving them into place with a suitable manual tool and leaving a joint of at least 2 mm between them. Always lay floors first and then tile the walls. A gap of at least 3 mm should be left between the perimeter of the floor and the bottom of walls.
6. Use self-levelling spacers to ensure the accurate positioning of tiles. These should be removed when the adhesive is dry and before grouting. Insert wedges by pushing them towards the tile laid previously. Wedges can correct up to 1 mm of difference in height.
7. When the adhesive is completely set, remove the levelling wedges with a mallet.
8. After installation, and depending on the type of adhesive used, floor surfaces should not be walked on for 12-24 hours.

### Technical Joints

Structural expansion and movement joints are essential to the durability of an attractive tiled surface. Ask a professional tiler for advice and/or help.

Structural expansion joints should be located over those found in the substrate and made using a suitable sealant or profile.

In outdoor floors, movement joints must be provided in areas of 9-12 sq.m. depending on the substrate and in high traffic indoor areas or on flexible substrates. Areas can be increased to 20-25 sq.m for indoor floors over a stable substrate.

In any case, always leave a gap of 3-5 mm between the perimeter of the floor and any walls, columns or corners and between tiled sections and sections covered in other materials.

The manufacturer declines all responsibility for installations without adequate joints between tiles: the minimum acceptable joint between tiles is 2 mm.

### 7\_GROUTING

Wait for the adhesive to set completely before grouting.

Instructions:

1. Make sure that the joints are clear and free from all traces of adhesive and/or powder. Residual material preventing filling of the joint to at least 2/3 the thickness of the tile must be removed.
2. Grout small areas at a time (4-5 sq.m.) especially when working with textured, non-slip or polished tiles. Use a suitable rubber spatula. Always test grout of a colour that contrasts with the tiles on a small, hidden area before grouting the rest of the surface.
3. Remove excess grout from the surface in diagonal strokes before the product dries, and remove all residues.
4. Clean the surface thoroughly with a sponge damped in clean water then wipe down the surface, including the joints with a damp cloth. Use a sponge and plenty of water to clean off epoxy grouts.

The reaction times and hardness of these products makes it impossible to remove residues once set. Always refer to the grout manufacturer's specifications to ensure that the product is suitable for the type of tile.

### 8\_CLEANING

The entire tiled surface must be cleaned, including the tiles, joints, movement joints and profiles. Cleaning must continue until all traces of installation materials have been eliminated.

#### INITIAL CLEANING

Initial cleaning is of fundamental importance for all subsequent steps and for correct maintenance over time. Thorough initial cleaning helps floors remain attractive and protected for years to come, and only has to be performed once, before the floor is used.

Initial cleaning should be performed 4-5 days after completion of grouting, when the grout sealant is perfectly dry, but no later than 10 days after.

Use an acid or alkaline detergent to suit the characteristics of the sealant. Always test detergents on an unused tile or on a small hidden area of the floor to ensure compatibility, especially in the case of lapped or polished tiles. Do not use cleaning products containing hydrofluoric acid (HF) or its derivatives.

After grouting and cleaning, the surface may still present a film of cement residue that cannot be removed using water alone. In such cases, the residue must be removed using an acid-based product, diluted according to the manufacturer's instructions.

Instructions:

1. Start by wetting the tile surface, especially the joints, which are not normally acid resistant.
2. Next, distribute the prepared acid solution over the surface and leave it react for a short time (2 minutes).
3. Do not allow the solution to dry on the floor. Remove it either manually or using a single-head scrubber-dryer fitted with a non-abrasive disc.
4. Rinse the surface thoroughly afterwards.

Use of a floor cleaner is particularly recommended for textured tiles and large surfaces. Manual methods can then be used to clean points inaccessible to the machine such as corners, along walls and wherever the machine cannot operate.

#### ORDINARY CLEANING

The purpose of ordinary cleaning is to remove dirt and marks and to restore the surface's original appearance. Porcelain tile does not require protective treatment: regular, thorough cleaning is sufficient

to keep it in perfect condition. Clean tiled surfaces thoroughly using hot water, a soft cloth or sponge and neutral detergent if necessary.

Industrial scrubber-dryers can be used to clean large floors, with inaccessible areas cleaned manually afterwards.

### 9\_GENERAL RECOMMENDATIONS

Never rub surfaces with abrasive materials such as metal scrubbing pads or hard brushes as these might leave indelible scratches or marks.

Remove greasy or oily residues using a detergent containing organic solvents or with an alkaline detergent (pH>9), then rinse the area thoroughly.

Do not use soaps as they can leave a slippery film on the surface, especially if used with hard water.

Do not use products containing waxes or shine- enhancing rinse agents. Do not use abrasive detergents on smooth and/or polished surfaces.

In the case of matt materials, always test abrasive detergents on a small area of tile first.

Always test any non-neutral detergent on an unused tile or on a hidden area of the floor first.

#### WARNING:

For material that has already been laid, Terratinta Group Srl:

- does not accept any complaints for visible defects.
- does not accept liability for the quality of the tiled surface but only for the characteristics of the material supplied.
- once the material has been laid, it is wise to keep aside a few tiles for possible future repairs or to have a sample of the material in the event of complaints.

# PACKAGING

## IMBALLI

	BOX   SCATOLA			PALLET		
	PCS   PZ	SQ.MT.   MQ	KG	BOXES   SCATOLE	SQ.MT.   MQ	KG
120x260cm 48"x102" <i>Light</i> matt rectified	1	3,12	43,99	20	64,20	960
120x120cm 48"x48" <i>Light</i> matt rectified	2	2,88	40,61	25	72,00	1.055
60x120cm 24"x48" <i>Light</i> matt rectified	3	2,16	30,46	16	34,56	507
90x90cm 36"x36" matt   <i>ultramatt</i> rectified	2	1,62	37,23	24	38,88	914
45x90cm 18"x36" matt rectified	3	1,215	29,50	32	38,88	964
60x60cm 24"x24" matt   <i>ultramatt</i> rectified	3	1,08	26	40	43,20	1060
30x60cm 12"x24" matt   <i>ultramatt</i> rectified	6	1,08	26	40	43,20	1060
20x60cm 8"x24" matt rectified	8	0,96	23,10	48	46,08	1.129
10x60cm 4"x24" matt rectified	15	0,90	21,70	40	36	888
10x10cm 4"x4" matt - <i>glue dot (30x30cm sheet)</i> matt <i>punctocolla (foglio 30x30cm)</i> rectified	10	0,90	20	30	27	620
mosaic 30x30cm 12"x12" (3x3 1 <sup>1/5</sup> "x1 <sup>1/5</sup> ") matt   <i>ultramatt</i>	11	1	24	30	30	740
mosaic 30x60cm 12"x24" matt	6	1,08	25,50	30	32,40	785
freccia mosaic 30x30x30 12"x12" matt	4	0,36	8,60	48	17,28	433
skirting 5x60cm 2"x24" matt rectified	12	7,20ml	8,50	-	-	-
skirting 5x90cm 2"x36" matt rectified	12	10,80ml	12	-	-	-
step 30x60cm 12"x24" matt rectified	6	1,08	26	-	-	-
step tread 34x90cm 14"x36" matt rectified	2	-	14,80	-	-	-
60x60cm 24"x24" THICK20MM ultra matt rectified	2	0,72	31,72	32	23,04	1.035

# TECHNICAL FEATURES

## CARATTERISTICHE TECNICHE

### TECHNICAL FEATURES UNGLAZED PORCELAIN STONEWARE

CONFORMING TO EUROPEAN STANDARDS EN 14411 ISO 13006 APP. G (GROUP BIA UGL WITH E<sub>B</sub> ≤ 0,5%)

CARATTERISTICHE TECNICHE GRÉS PORCELLANATO TUTTA MASSA Conformi a Norme Europee EN 14411 ISO 13006 App. G (Gruppo Bia UGL con E<sub>B</sub> ≤ 0,5%)

TECHNISCHE EIGENSCHAFTEN FEINSTEINZEUG DURCHFARBET Gemäß den Europäischen Normen EN 14411 ISO 13006 App. G (Gruppe Bia UGL mit E<sub>B</sub> ≤ 0,5%)

CARACTERISTIQUES TECHNIQUES GRÉS CERAME PLEIN MASSE Conformes aux Normes Européennes EN 14411 ISO 13006 App. G (Groupe Bia UGL avec E<sub>B</sub> ≤ 0,5%)

	TECHNICAL FEATURES CARATTERISTICHE TECNICHE TECHNISCHE DATEN CARACTERISTIQUE TECHNIQUE	TESTING METHOD METODICA DI PROVA PRÜFVERFAHREN NORME D'ESSAIS	REFERENCE STANDARD RIFERIMENTO NORMA STANDARDWERT RÉFÉRENCE NORME	TEST RESULTS VALORE PRODOTTO PRODUKT WERTE VALEUR PRODUIT
	Sizes Dimensioni Abmessungen Dimensions	EN ISO 10545-2	N <sub>z</sub> 15 cm • Length and width - Lunghezza e larghezza - Länge und Breite - Longueur et largeur (%)(mm) • Thickness - Spessore - Stärke - Epaisseur ±0,6% ±2,0 mm • Linearity - Rettilinearità spigoli - Kantengeradheit - Rectitude des arêtes ±0,5 ±0,5 • Wedging - Ortogonalità - Rechtwinkligkeit - Orthogonalité ±0,5 ±2,0 • Warpage - Planarità - Ebenföchigkeit - Planéité 0,5 ±2,0 • Appearance: percentage of acceptable tiles, per lot Aspetto: percentuale di piastrelle accettabili nel lotto Oberflächenbeschaffenheit: Prozentsatz der Fliesen, die den geforderten Eigenschaften entsprechen Aspect: pourcentage de carreaux acceptables sur la fourniture totale 95% min. -	Compliant Conforme Erfüllt Conforme
	Water absorption Assorbimento d'acqua Wasseraufnahme Absorption d'eau	EN ISO 10545-3	E <sub>B</sub> ≤ 0,5%	Compliant Conforme Erfüllt Conforme
	Modulus of rupture Resistenza alla flessione Biegezugfestigkeit Résistance à la flexion	EN ISO 10545-4	Medium value 35 N/mm <sup>2</sup> min.	Compliant Conforme Erfüllt Conforme
	Breaking strenght Carico di rottura Bruchlast Charge de rupture		sp. > = 7,5 mm: min 1300 N SLABS sp. < 7,5 mm	Compliant Conforme Erfüllt Conforme
	Abrasion resistance Resistenza all'abrasione Abriebbeständigkeit Résistance à l'abrasion	EN ISO 10545-6	175 mm <sup>3</sup> max	Average Medio - Mittelwert - Moyenne < 150 mm <sup>3</sup>
	Thermal expansion coefficient Coefficiente di dilatazione termica lineare Wärmeausdehnung Coefficient de dilatation thermique linéaire	EN ISO 10545-8	*Declared value Valore dichiarato Angegabener Wert Valeur déclarée	≤9 MK-1
	Thermal shock resistance Resistenza agli sbalzi termici Temperaturwechselbeständigkeit Résistance aux écarts de température	EN ISO 10545-9	*Pass according to ISO 10545-1 Test superato in accordo con ISO 10545-1 Test ueberstanden nach ISO 10545-1 Pven accord avec norme en 10545-1	Resistant Resistente Widerstandsfähig Résistant
	Frost resistance Resistenza al gelo Frostbeständigkeit Résistance au gel	EN ISO 10545-12	*Pass according to ISO 10545-1 Test superato in accordo con ISO 10545-1 Test ueberstanden nach ISO 10545-1 Pven accord avec norme en 10545-1	Resistant Resistente Widerstandsfähig Résistant
	Resistance to low concentrations of acids and alkali Resistenza a basse concentrazioni di acidi e alcali Beständigkeit gegen schwach konzentrierten Säuren und Laugen Résistance à des basses concentrations d'acides et bases		*Declared value Valore dichiarato Angegabener Wert Valeur déclarée	From ULA to ULB Da ULA a ULB Von ULA bis ULB De ULA jusqu'à ULB
	Resistance to high concentrations of acids and alkali Resistenza ad alte concentrazioni di acidi e alcali Beständigkeit gegen stark konzentrierten Säuren und Laugen Résistance à des hautes concentrations d'acides et bases	EN ISO 10545-13	*Declared value Valore dichiarato Angegabener Wert Valeur déclarée	From UHA to UHB Da UHA a UHB Von UHA bis UHB De UHA jusqu'à UHB
	Resistance to domestic chemicals and additives for swimming pools Resistenza ai prodotti chimici di uso domestico e agli additivi per piscina Beständigkeit gegen chemischen Haushaltsreiniger und Zusatzstoffe für Schwimmbäder Résistance aux prod. chimiques d'usage domestique et additifs pour piscines		UB min.	UA
	Stain resistance of unglazed porcelain Resistenza alle macchie di piastrelle non smaltate Fleckenbeständigkeit von unglasierten Fliesen Résistance aux tâches des carreaux non émaillés	EN ISO 10545-14	*Declared value Valore dichiarato Angegabener Wert Valeur déclaré	CLASSE 5
	Colors resistance to light Resistenza dei colori alla luce Lichtbeständigkeit Résistance des couleurs a la lumière	DIN 51094	No noticeable color change. Non devono presentare apprezzabili variazioni di colore. Die Muster dürfen keine sichtbaren Farbveränderungen aufweisen. Ne doivent pas présenter de variations importantes des couleurs.	No alteration after testing Materiale inalterato dopo il test Keine Veränderung nach dem Test Aucune altération relevée
	Friction coefficient (Slipperiness) Coefficiente di attrito (Scivolosità) Reibungskoeffizient (Schlupfrigkeit) Coefficient de friction (Glissement)	DIN 51130 ANSI A137.1 (DCOF)	*Declared value Valore dichiarato Angegabener Wert Valeur déclaré	R10 matt R11 ultra matt >0,42

\*It's advisable to refer to Contract Division for all necessary guidelines to a correct use.  
Si raccomanda di consultare Contract Division per le indicazioni necessarie al corretto utilizzo.  
Zur korrekten Anwendung wird empfohlen mit unserem Contract Division Kontakt aufzunehmen.  
Merci de consulter nôtre Contract Division pour les indications a un usage correct.

**CHANGE** WE CAN  
CHANGE  
HABITS  
**NOT OUR  
PLANET**  
BY  
TERRATINTA  
group

"Stay hungry, stay foolish."

S. Jobs 1955-2011

---

*Special thanks to Carl Hansen & Søn*



**terratinta** 100%  
ceramiche made in  
Italy

*#notaclassicstory*

brand of Terratinta Group Srl SB

// 45, via Viazza Il Tronco 41042

Fiorano Modenese(MO) Italy

T +39 0536911408

F +39 05361940223

terratintagroup.com

Terratinta Group

terratinta\_ceramiche //

*#terratintastyle*

**terratinta** 100%  
ceramiche made in  
Italy

---

**terratinta.com**