

PIETRA



PIETRA



4 LIMESTONE

20 INCISA

26 CEPP0 TH/CK20_{mm}

31 PACKAGING

32 TECHNICAL FEATURES



PIETRA

A collection with multiple souls.

A project of colour and texture, in the name of a natural stone look. From Limestone, a mix of soft-look stones that are universal and suitable for any use and design to Travertino, a veined and directional classic stone with a strong personality – following on to Incisa, a natural and transversal interpretation in R11 of the Limestone look: 3 finishes and looks in 4 colours, in a mix of warm and cold tones. From commercial to Design-Led projects, Pietra is set to become an everlasting series for Ceramica Magica.

Eclectic design for both interiors and exteriors: Pietra.

Una serie dalle molteplici anime.

Un progetto di colore e di materia, all'insegna dell'effetto pietra naturale.

Dal Limestone, un mix di pietre dal look soft che lo rendono universale e adatto a qualsiasi utilizzo e design, al Travertino, un classico venato, direzionale e dalla forte personalità, fino all'Incisa, un'interpretazione naturale e trasversale in R11 della finitura Limestone: 3 finiture e look in 4 colori, in un mix di toni caldi e freddi. Dal progetto commerciale al design d'interni, la collezione Pietra è destinata a diventare una serie eterna per Ceramica Magica.

Design eclettico, per interni ed esterni: Pietra.

PIETRA

limestone



LIMESTONE ivory
60x120 matt



LIMESTONE grey
60x120 matt

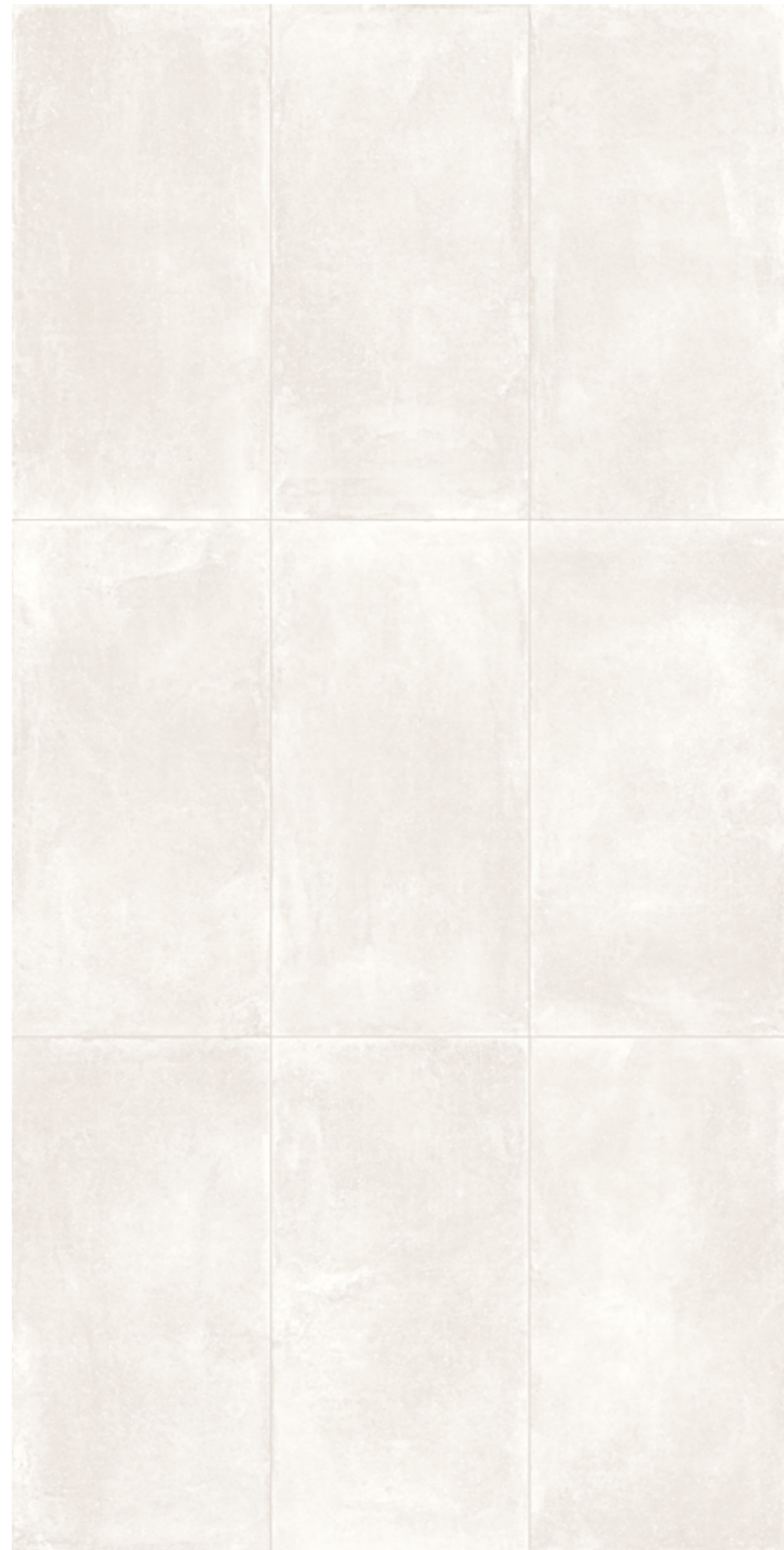


PIETRA

limestone



LIMESTONE black
60x120 matt



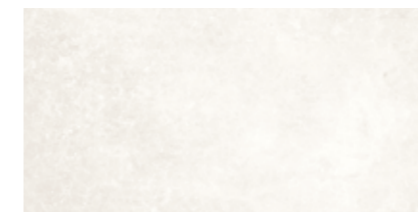
graphic development 60x120



LIMESTONE 60x120 24"x48"
matt



LIMESTONE 60x60 24"x24"
matt



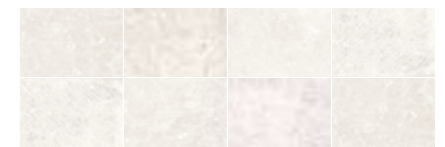
LIMESTONE 30x60 12"x24"
matt



LIMESTONE 30x30 12"x12"
matt



LIMESTONE 15x15 matt



mix LIMESTONE | INCISA
10x15 mix



LIMESTONE mosaic
30x30 12"x12"
(5x5 2"x2") matt



LIMESTONE herringbone
30x30 12"x12"
matt



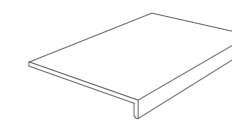
mix LIMESTONE | INCISA
spaccatella 30x30 12"x12"



LIMESTONE brick wall
30x60 12"x24" matt



skirting
7x60 - 3"x24"
matt



step 33x120x4
13"x48"x2"
matt



graphic development 60x120



LIMESTONE 60x120 24"x48"
matt



LIMESTONE 60x60 24"x24"
matt



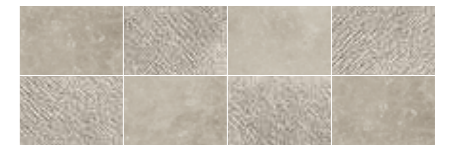
LIMESTONE 30x60 12"x24"
matt



LIMESTONE 30x30 12"x12"
matt



LIMESTONE 15x15 matt



mix LIMESTONE | INCISA
10x15 mix



LIMESTONE mosaic
30x30 12"x12"
(5x5 2"x2") matt



LIMESTONE herringbone
30x30 12"x12"
matt



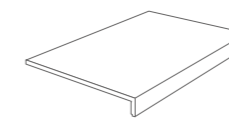
mix LIMESTONE | INCISA
spaccatella 30x30 12"x12"
matt



LIMESTONE brick wall
30x60 12"x24" matt



skirting
7x60 - 3"x24"
matt



step 33x120x4
13"x48"x2"
matt



graphic development 60x120



LIMESTONE 60x120 24"x48"
matt



LIMESTONE 60x60 24"x24"
matt



LIMESTONE 30x60 12"x24"
matt



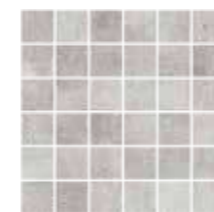
LIMESTONE 30x30 12"x12"
matt



LIMESTONE 15x15 matt



mix LIMESTONE | INCISA
10x15 mix



LIMESTONE mosaic
30x30 12"x12"
(5x5 2"x2") matt



LIMESTONE herringbone
30x30 12"x12"
matt



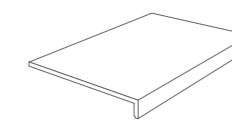
mix LIMESTONE | INCISA
spaccatella 30x30 12"x12"



LIMESTONE brick wall
30x60 12"x24" matt



skirting
7x60 - 3"x24"
matt



step 33x120x4
13"x48"x2"
matt



graphic development 60x120



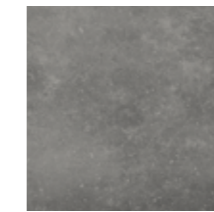
LIMESTONE 60x120 24"x48"
matt



LIMESTONE 60x60 24"x24"
matt



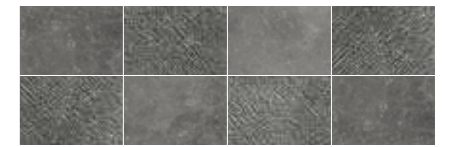
LIMESTONE 30x60 12"x24"
matt



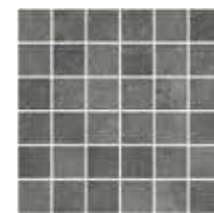
LIMESTONE 30x30 12"x12"
matt



LIMESTONE 15x15 matt



mix LIMESTONE | INCISA
10x15 mix



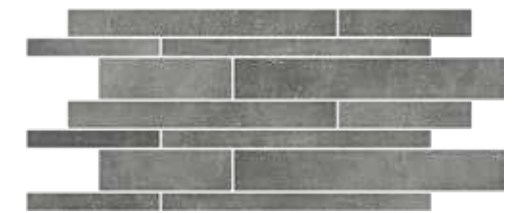
LIMESTONE mosaic
30x30 12"x12"
(5x5 2"x2") matt



LIMESTONE herringbone
30x30 12"x12"
matt



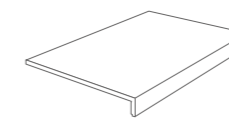
mix
LIMESTONE | INCISA
spaccatella 30x30 12"x12"



LIMESTONE brick wall
30x60 12"x24" matt



skirting
7x60 - 3"x24"
matt



step 33x120x4
13"x48"x2"
matt

PIETRA

incisa



LIMESTONE | INCISA grey
wall 10x15 mix

INCISA grey
floor 60x60 matt



ivory



taupe

graphic development 60x60



INCISA ivory
60x60 24"x24" antislip



INCISA ivory
30x60 12"x24" antislip



INCISA ivory
30x30 12"x12"
(5x5 2"x2") antislip



INCISA ivory brick wall
30x60 12"x24" antislip



INCISA taupe
60x60 24"x24" antislip



INCISA taupe
30x60 12"x24" antislip



INCISA taupe
30x30 12"x12"
(5x5 2"x2") antislip



INCISA taupe brick wall
30x60 12"x24" antislip



grey



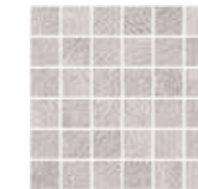
black



INCISA grey
60x60 24"x24" antislip



INCISA grey
30x60 12"x24"
antislip



INCISA grey
30x30 12"x12"
(5x5 2"x2") antislip



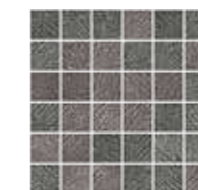
INCISA grey brick wall
30x60 12"x24" antislip



INCISA black
60x60 24"x24" antislip



INCISA black
30x60 12"x24"
antislip



INCISA black
30x30 12"x12"
(5x5 2"x2") antislip



INCISA black brick wall
30x60 12"x24" antislip



PIETRA limestone ivory
50x100 structured

PIETRA

limestone ivory

TH/CK20_{mm}



50x100 - 20"x40"
structured

TH/CK20_{mm}



PIETRA limestone grey
50x100 structured

PIETRA

limestone grey
TH/CK20_{mm}



50x100 - 20"x40"
structured

TH/CK20_{mm}

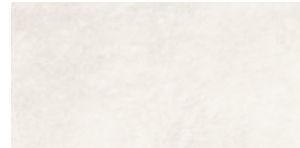
PIETRA TH/CK_{20mm}

structured

50x100cm | 20"x40"

± 20mm

Limestone Ivory



50x100cm - 20"x40"
structured

Limestone Grey




50x100cm - 20"x40"
structured

#packaging

PIETRA TH/CK_{20mm}

± 20MM V2 MODERATE

SIZES	BOX			PALLET		
	PCS	SQ.MT.	KG	BOXES	SQ.MT.	KG
 50x100 cm 20"x40" PIETRA LIMESTONE IVORY GREY STRUCTURED RECTIFIED	1	0,50	23,50	50	25,00	1195

#packaging

PIETRA

± 9,5 MM V2 MODERATE

SIZES	BOX			PALLET		
	PCS	SQ.MT.	KG	BOXES	SQ.MT.	KG
 LIMESTONE 60x120 cm 24"x48" MATT RECTIFIED	2	1,44	33,00	36	51,84	1264
 LIMESTONE 60x60 cm 24"x24" MATT RECTIFIED	3	1,08	22,80	40	43,20	932
 INCISA 60x60 cm 24"x24" ANTISLIP RECTIFIED	3	1,08	22,80	40	43,20	932
 LIMESTONE 30x60 cm 12"x24" MATT RECTIFIED	6	1,08	22,20	48	51,85	1086
 INCISA 30x60 cm 12"x24" ANTISLIP RECTIFIED	6	1,08	22,20	48	51,85	1086
 LIMESTONE 30x30 cm 12"x12" MATT RECTIFIED	11	1,00	20,50	48	48,00	1004
 LIMESTONE 15x15 cm 6"x6" MATT RECTIFIED	44	1,00	20,50	48	48,00	1004
 mix LIMESTONE/INCISA 10x15 cm 4"x6" MATT/ANTISLIP RECTIFIED	66	1,00	20,50	48	48,00	1004
 LIMESTONE/INCISA mosaic 30x30 cm 12"x12" (5x5 - 2"x2") MATT/ANTISLIP	11	1,00	20,00	30	30,00	620
 LIMESTONE herringbone 30x30 cm 12"x12" MATT	10	0,80	16,40	36	28,80	610
 mix LIMESTONE/INCISA spaccatella 30x30 cm 12"x12" (6,5x3-2x1 - 3"x3"-1"x1")	10	0,80	18,04	36	21,68	669
 LIMESTONE/INCISA brick wall 30x60 cm 12"x24" MATT	4	0,72	16,05	30	21,60	501
 LIMESTONE skirting 7x60 cm 3"x24" MATT RECTIFIED	14	8,4ml	14,00	-	-	-
 LIMESTONE step 33x120x4 cm 13"x48"x2" STEP TREAD WITH FULL SKIRTING MATT RECTIFIED	2	-	18,20	-	-	-










TECHNICAL FEATURES UNGLAZED PORCELAIN TILES

CONFORMING TO EUROPEAN STANDARDS EN 14411 ISO 13006 APP. G (GROUP BIA UGL WITH EB ≤ 0,5%)

CARATTERISTICHE TECNICHE GRÈS PORCELLANATO NON SMALTATO Conformi a Norme Europee EN 14411 ISO 13006 App. G (Gruppo Bia UGL con Eb ≤ 0,5%)

TECHNISCHE EIGENSCHAFTEN UNGLASIERTES FEINSTEINZEUG Gemäß den Europäischen Normen EN 14411 ISO 13006 App. G (Gruppe Bia UGL mit Eb ≤ 0,5%)

CARACTERISTIQUES TECHNIQUES GRÈS CÉRAME FIN NON ÉMAILLÉ Conformes aux Normes Européennes EN 14411 ISO 13006 App. G (Groupe Bia UGL avec Eb ≤ 0,5%)

TECHNICAL FEATURES CARATTERISTICHE TECNICHE TECHNISCHE DATEN CARACTERISTIQUES TECHNIQUES	TESTING METHOD METODICA DI PROVA PRÜFVERFAHREN NORME D'ESSAIS	REFERENCE STANDARD RIFERIMENTO NORMA STANDARDEWERT RÉFÉRENCE NORME	TEST RESULTS VALORE PRODOTTO PRODUKT WERTE VALEUR PRODUIT
 <p>Sizes Dimensioni Abmessungen Dimensions</p>	EN ISO 10545-2	<p>N: 15cm</p> <ul style="list-style-type: none"> Length and width - Lunghezza e larghezza - Länge und Breite - Longueur et largeur: ±0,6% (mm) ±2,0 Thickness/Spessore - Stärke - Epaisseur: ±0,5 ±0,5 Linearity - Rettilinearità spigoli - Kantengeradheit - Rectitude des arêtes: ±0,5 ±1,5 Wedgini - Ortogonalità - orthogonalité - Rechtwinkigkeit - Ortogonalité: ±0,5 ±2,0 Warpage - Planarità - Ebenförmigkeit - planarité: ±0,5 ±2,0 Appearance: percentage of acceptable tiles, per lot. Aspetto: percentuale di piastrelle accettabili nel lotto. Oberflächeneigenschaften: Prozentsatz der Fliesen, die den geforderten Eigenschaften entsprechen. Aspect: pourcentage de carreaux acceptables sur la fourniture totale: 95% min. - 	<p>Compliant Conforme Erfüllt Conforme</p>
 <p>Water absorption Assorbimento d'acqua Wasseraufnahme Absorption d'eau</p>	EN ISO 10545-3	<p>Eb ≤ 0,5%</p>	<p>Compliant Conforme Erfüllt Conforme</p>
 <p>Modulus of rupture Resistenza alla flessione Biegezugfestigkeit Résistance à la flexion</p>	EN ISO 10545-4	<p>Medium value 35 N/mm² min.</p>	<p>Compliant Conforme Erfüllt Conforme</p>
 <p>Breaking strenght Carico di rottura Bruchlast Charge de rupture</p>		<p>sp. > = 7,5 mm: min 1300 N</p>	<p>Compliant Conforme Erfüllt Conforme</p>
 <p>Abrasion resistance Resistenza all'abrasione Abriebbeständigkeit Résistance à l'abrasion</p>	EN ISO 10545-6	<p>175 mm³ max</p>	<p>Average Medio - Mittelwert - Moyenne < 150 mm³</p>
 <p>Thermal expansion coefficient Coefficiente di dilatazione termica lineare Wärmeausdehnung Coefficient de dilatation thermique linéaire</p>	EN ISO 10545-8	<p>*Declared value Valore dichiarato Angegebener Wert Valeur déclarée</p>	<p>≤9 MK-1</p>
 <p>Thermal shock resistance Resistenza agli sbalzi termici Temperaturwechselbeständigkeit Résistance aux écarts de température</p>	EN ISO 10545-9	<p>*Pass according to ISO 10545-1 Test superato in accordo con ISO 10545-1 Test überstanden nach ISO 10545-1 PV en accord avec norme en 10545-1</p>	<p>Resistant Resistente Widerstandsfähig Résistant</p>
 <p>Frost resistance Resistenza al gelo Frostbeständigkeit Résistance au gel</p>	EN ISO 10545-12	<p>*Pass according to ISO 10545-1 Test superato in accordo con ISO 10545-1 Test überstanden nach ISO 10545-1 PV en accord avec norme en 10545-1</p>	<p>Resistant Resistente Widerstandsfähig Résistant</p>
 <p>Resistance to low concentrations of acids and alkali Resistenza a basse concentrazioni di acidi e alcali Beständigkeit gegen schwach konzentrierte Säuren und Laugen Résistance à des basses concentrations d'acides et bases</p>	EN ISO 10545-13	<p>*Declared value Valore dichiarato Angegebener Wert Valeur déclarée</p>	<p>From ULA to ULB Da ULA a ULB Von ULA bis ULB De ULA jusqu'à ULB</p>
<p>Resistance to high concentrations of acids and alkali Resistenza ad alte concentrazioni di acidi e alcali Beständigkeit gegen stark konzentrierte Säuren und Laugen Résistance à des hautes concentrations d'acides et bases</p>		<p>*Declared value Valore dichiarato Angegebener Wert Valeur déclarée</p>	<p>From UHA to UHB Da UHA a UHB Von UHA bis UHB De UHA jusqu'à UHB</p>
<p>Resistance to domestic chemicals and additives for swimming pools Resistenza ai prodotti chimici di uso domestico e agli additivi per piscina Beständigkeit gegen chemische Haushaltsreiniger und Zusatzstoffe für Schwimmbäder Résistance aux prod. chimiques d'usage domestique et additifs pour piscines</p>		<p>UB min.</p>	<p>UA</p>
 <p>Stain resistance of unglazed porcelain Resistenza alle macchie di piastrelle non smaltate Fleckenbeständigkeit von unglasierten Fliesen Résistance aux tâches des carreaux non émaillés</p>	EN ISO 10545-14	<p>*Declared value Valore dichiarato Angegebener Wert Valeur déclaré</p>	<p>CLASS 5</p>
 <p>Colors resistance to light Resistenza dei colori alla luce Lichtbeständigkeit Résistance des couleurs à la lumière</p>	DIN 51094	<p>No noticeable color change. Non devono presentarsi apprezzabili variazioni di colore. Die Muster dürfen keine sichtbaren Farbveränderungen aufweisen. Ne doivent pas présenter de variations importantes des couleurs.</p>	<p>No alteration after testing Materiale inalterato dopo il test Keine Veränderung nach dem Test Aucune altération relevée</p>
 <p>Friction coefficient (Slipperiness) Coefficiente di attrito (Scivolosità) Reibungskoeffizient (Schlupfrigkeit) Coefficient de friction (Glissement)</p>	DIN 51130 ANSI A137.1 (DCOF)	<p>*Declared value Valore dichiarato Angegebener Wert Valeur déclaré</p>	<p>R10* PIETRA matt R11* Thick20mm structure >0,42 matt / Thick20mm structured</p>

* It's advisable to refer Contract Division for all necessary guidelines to a correct use.
Si raccomanda di consultare Contract Division per le indicazioni necessarie al corretto utilizzo.
Zur korrekten Anwendung wird empfohlen unsere Contract Division zu kontaktieren.
Merci de consulter notre Contract Division pour les indications à un usage correct.

03 | PIETRA

Une série avec plusieurs âmes.

Un projet de couleur et de matière caractérisé par un effet pierre naturelle.

Limestone : un mix de pierres au look soft universel qui convient à tout usage et design.

Incisa : une interprétation naturelle et transversale de la finition Limestone, en R11: 3 surfaces en 4 couleurs, un mix de tonalités chaudes et froides.

Du projet commercial au design d'intérieurs, Pietra va devenir pour Ceramica Magica une gamme éternelle.

Un design éclectique pour intérieurs et extérieurs, voilà Pietra.

Eine Serie mit mehreren Herzen.

Ein Projekt über Farbe und Struktur, Naturstein-Effekt.

Von Limestone, ein Mix von weich-asussehenden Steinen, die das Produkt universell und für jedes Gebrauch und Design geeignet machen, bis zu Incisa, eine natürliche und durchgehende Interpretation in R11 des Limestone-Look: 2 Oberflächen und Look in 4 Farben, in einem Mix von wärmen und kalten Töne.

Von Projektbereich bis zu Interior Design, die Kollektion Pietra wird eine ständige Serie für Ceramica Magica sein.

Eklektisches Design, für Innen- und Aussenbereich: Pietra.

Una colección con muchas almas. Un proyecto de color y textura, en la identidad de un aspecto de piedra natural. Desde Limestone, una combinación de piedras de aspecto suave que lo hacen universal y adecuado para cualquier uso y design, hasta Incisa, una interpretación natural y transversal en R11 del estilo Limestone: 2 acabados y estilos en 4 colores, en una combinación de tonos cálidos y fríos. Desde proyectos comerciales hasta design de interiores, la colección Pietra es destinada a convertirse en una serie eterna por Ceramica Magica. Design ecléctico, tanto para los espacios interiores como para aquellos exteriores: Pietra.

“ STAY HUNGRY, STAY FOOLISH .”

S. Jobs 1955-2011

CHANGE WE CAN
CHANGE
HABITS
**NOT OUR
PLANET**
BY
TERRATINTA
group

CE

EN 14411: 2012

Declaration of performance available on our website www.cermagica.it

Dichiarazione di prestazione consultabile sul sito www.cermagica.it

Declaration de prestation consultable sur site www.cermagica.it

Leistungserklärung befragbar auf Website www.cermagica.it

Declaración de prestaciones consultable en nuestro sitio web www.cermagica.it

FOR TECHNICAL REASONS, THE COLOURS SHOWN MAY SLIGHTLY DIFFER FROM THE ACTUAL TILES. CERAMICA MAGICA RESERVES THE RIGHT TO MODIFY THE TECHNICAL INFORMATION QUOTED IN THIS CATALOGUE.

PER RAGIONI TECNICHE DI STAMPA I TONI RIPRODOTTI POSSONO PRESENTARE DELLE ALTERAZIONI DI COLORE RISPETTO AI CAMPIONI ORIGINALI. CERAMICA MAGICA SI RISERVA LA FACOLTÀ DI MODIFICARE LE INFORMAZIONI TECNICHE RIPORTATE IN QUESTO CATALOGO.




POUR DES RAISONS TECHNIQUES, LA REPRODUCTION DES COLORIS NE PEUT ÊTRE ABSOLUMENT EXACTE. CERAMICA MAGICA SE RÉSERVE LE DROIT DE MODIFIER LES RENSEIGNEMENTS TECHNIQUES INDIQUÉS DANS CE CATALOGUE.

AUS TECHNISCHEN GRÜNDEN SIND FARBVERÄNDERUNGEN GEGENÜBER DEN ORIGINALEN MÖGLICH. CERAMICA MAGICA HAT DAS RECHT, DIE IN DIESEM KATALOG AUFGEFÜHRTE TECHNISCHE ANGABEN ZU ÄNDERN.

POR RAZONES TÉCNICAS, LOS TONOS REPRODUCIDOS PUEDEN PRESENTAR ALTERACIONES DE COLOR RESPECTO DE LOS AZULEJOS REALES. CERAMICA MAGICA SE RESERVA EL DERECHO DE MODIFICAR LA INFORMACIÓN TÉCNICA CITADA EN ESTE CATÁLOGO.

brand of Terratinta Group Srl SB

Via Viazza Il Tronco 45, 41042 Fiorano Modenese (MO) - ITALY Tel. +39 0536911408 Fax +39 05361940223

www.cermagica.it - info@cermagica.it  /Terratinta Group  /ceramicamagica  /Terratinta Group

MADE IN ITALY





Creating design. : MADE IN ITALY

.....
brand of Terratinta Group Srl SB

Via Viazza Il Tronco 45, 41042 Fiorano Modenese (MO) - ITALY - Tel.+39 0536911408 - Fax +39 05361940223
www.cermagica.it info@cermagica.it /Terratinta Group /ceramicamagica /Terratinta Group