



● **Liscio Naturale Rettificato**  
Unpolished Rectified  
Matt Rektifiziert  
Naturel Rectifié

⊙ **Liscio Lappato Rettificato**  
Honed Rectified  
Geläpft Rektifiziert  
Adouci Rectifié

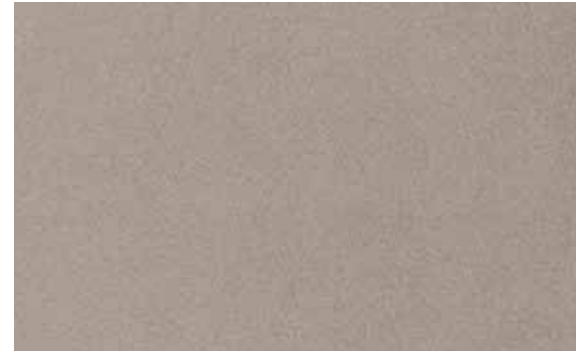
● **Riga Dritta Esterno R11 Rettificato**  
Outdoor R11 Rectified  
Aussenbereich R11 Rektifiziert  
Exterieur R11 Rectifié

● **Riga Diago Esterno R11 Rettificato**  
Outdoor R11 Rectified  
Aussenbereich R11 Rektifiziert  
Exterieur R11 Rectifié





Silver Stone **Liscio Ivory**



Silver Stone **Liscio Greige**



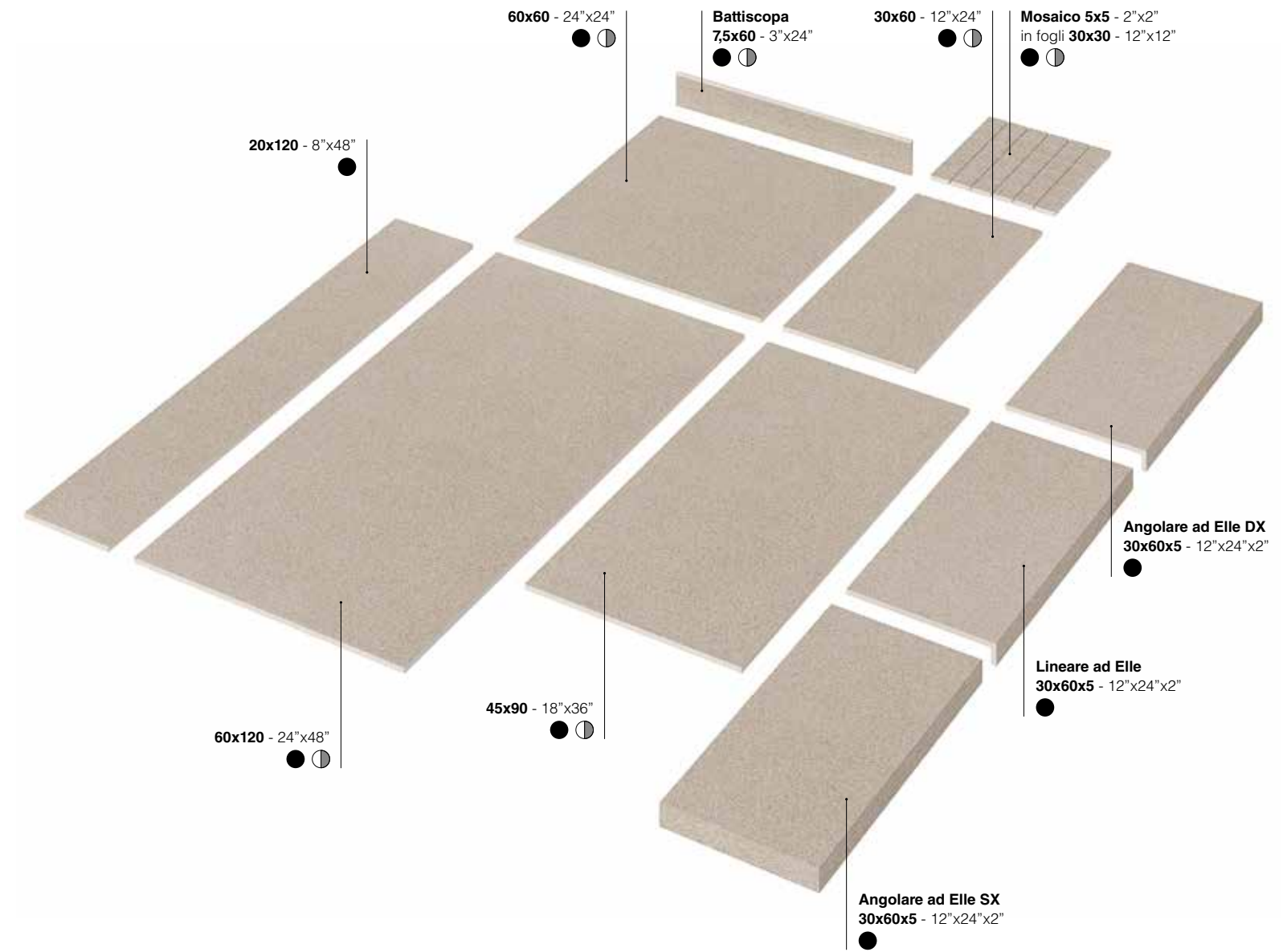
Silver Stone **Liscio Silver**



Silver Stone **Liscio Graphite**



Greige 45x90 - 18"x36" Naturale Rettificato  
Greige Mix Esagono 19x22 - 7 1/2"x8 1/2" Strutturato Rettificato



**SUPERFICI** SURFACES OBERFLÄCHEN SURFACES

● **Naturale Rettificato**  
Unpolished Rectified  
Matt Rektifiziert  
Naturel Rectifié

◐ **Lappato Rettificato**  
Honed Rectified  
Geläpft Rektifiziert  
Adouci Rectifié



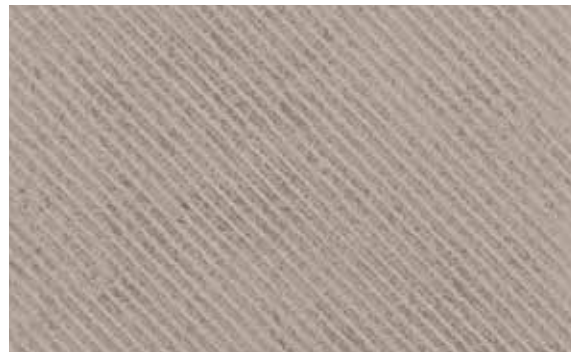
Silver Stone **Riga Dritta Ivory**



Silver Stone **Riga Diago Ivory**



Silver Stone **Riga Dritta Greige**



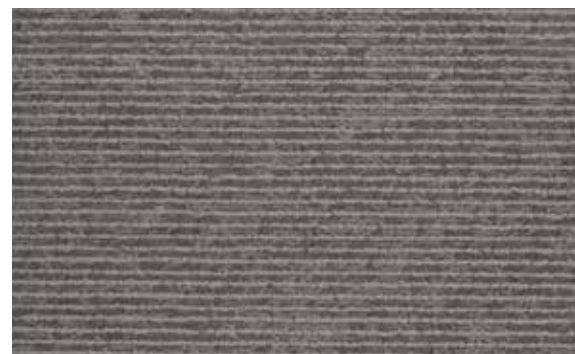
Silver Stone **Riga Diago Greige**



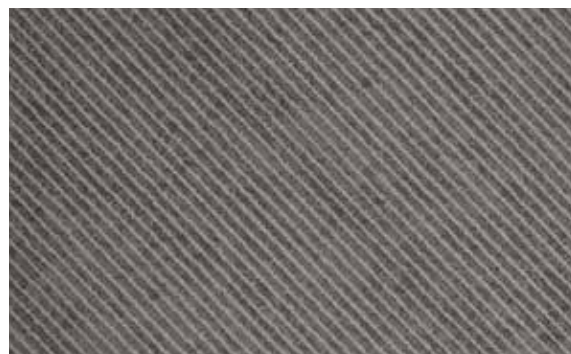
Silver Stone **Riga Dritta Silver**



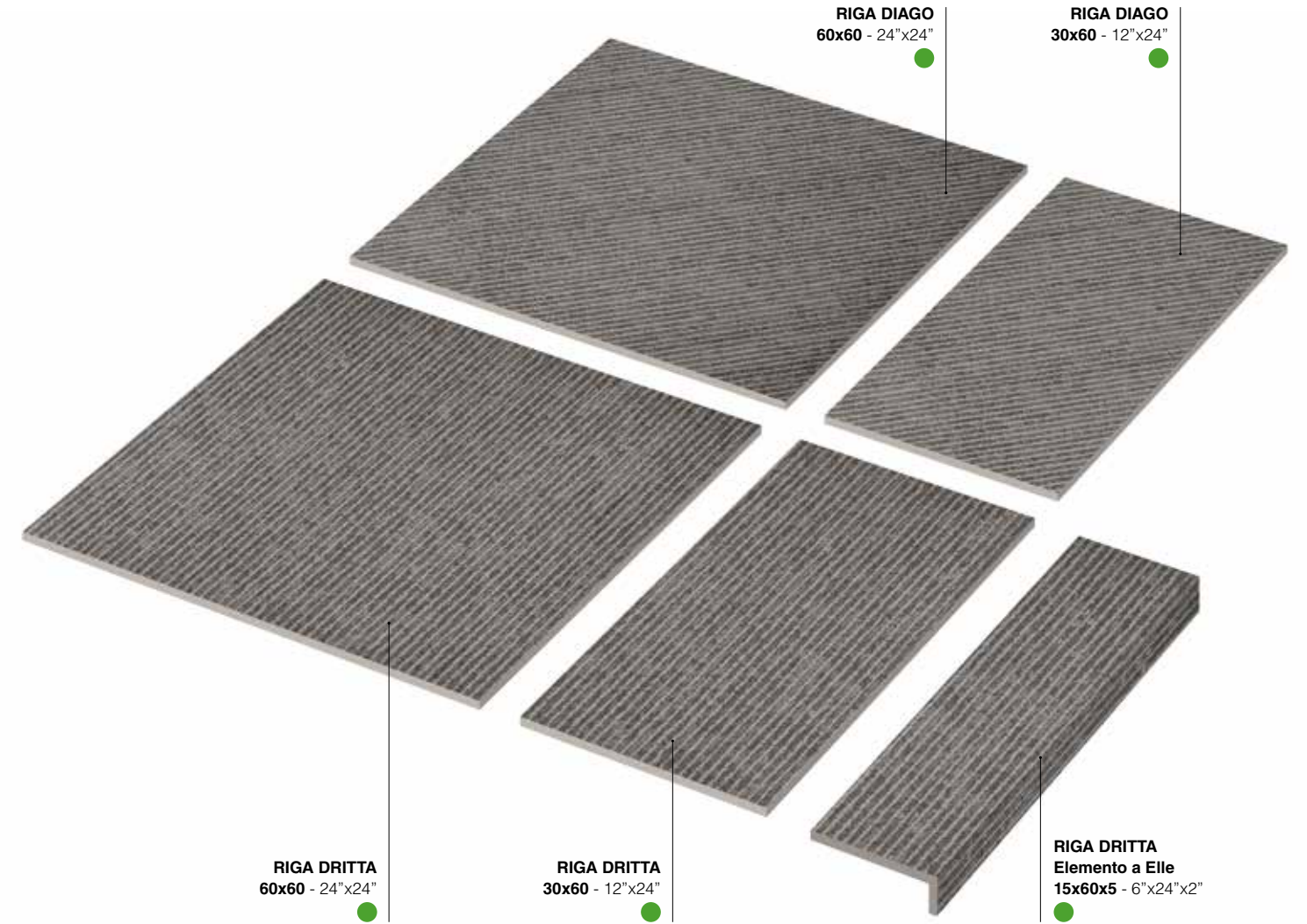
Silver Stone **Riga Diago Silver**



Silver Stone **Riga Dritta Graphite**



Silver Stone **Riga Diago Graphite**



**SUPERFICI** SURFACES OBERFLÄCHEN SURFACES

- **Esterno R11 Rettificato**  
Outdoor R11 Rectified  
Aussenbereich R11 Rektifiziert  
Exterieur R11 Rectifié



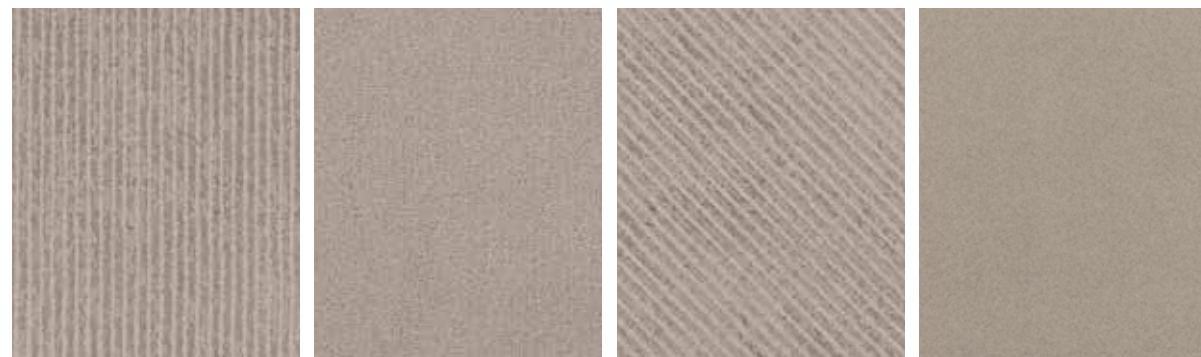
● **Mix**  
**Strutturato Rettificato**  
Textured Rectified  
Strukturiert Rektifiziert  
Structuré Rectifié



Graphite Mix 30x60 - 12"x24" Strutturato Rettificato  
Graphite Mix 15x60 - 12"x24" Strutturato Rettificato  
Provenzale Graphite Mix Strutturato Rettificato



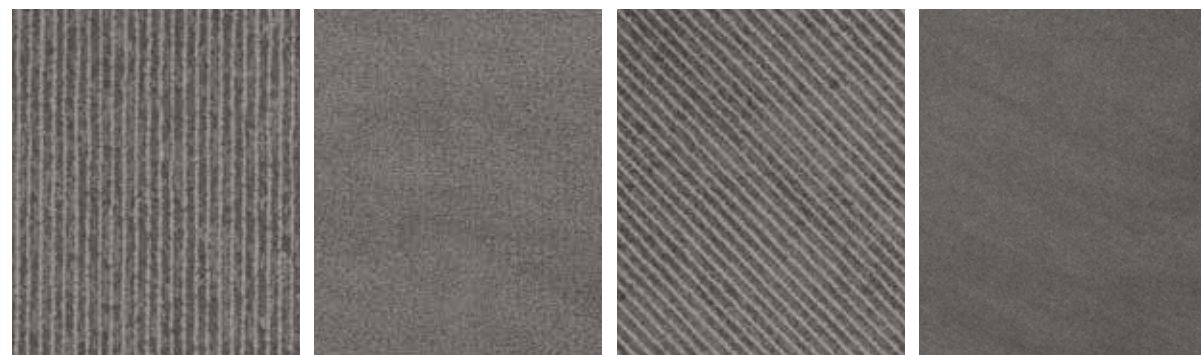
Silver Stone **Mix Ivory**



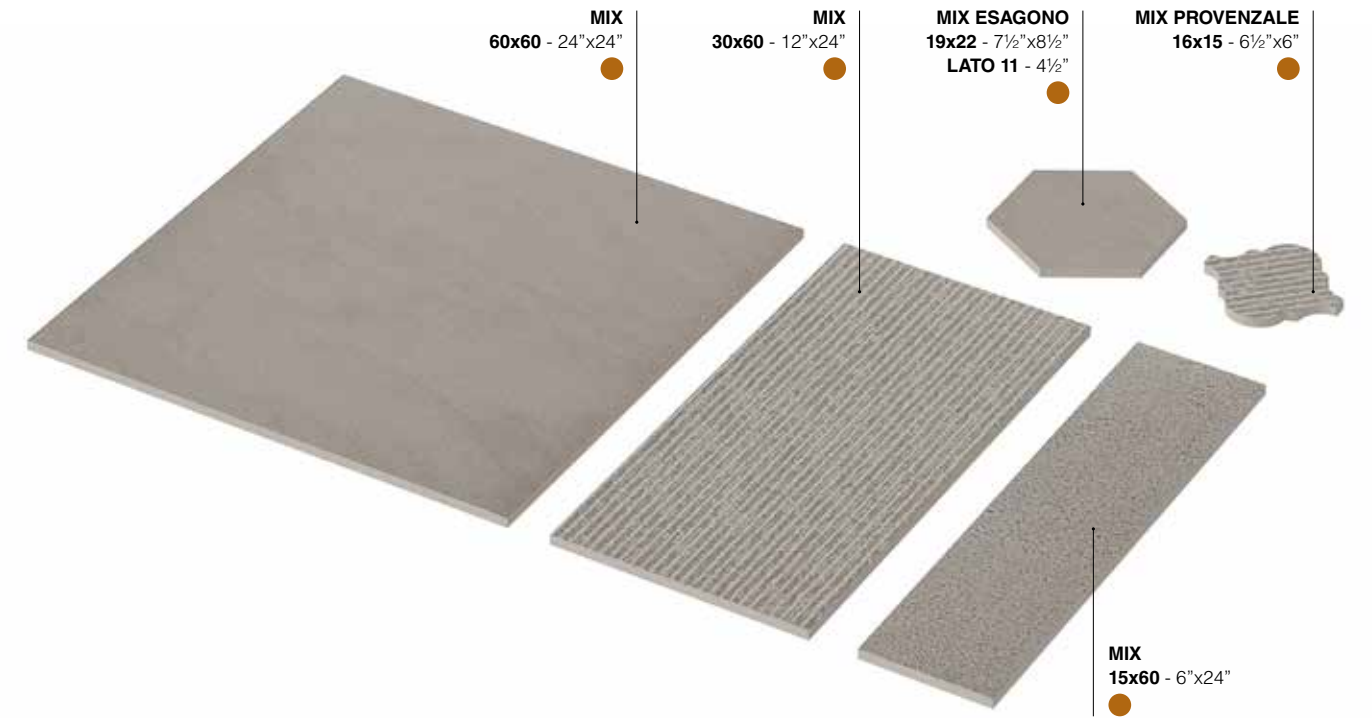
Silver Stone **Mix Greige**



Silver Stone **Mix Silver**








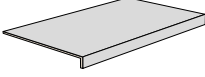
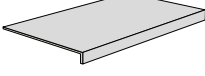
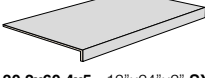


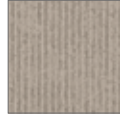
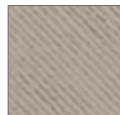



Silver Stone **Mix Graphite**



**SUPERFICI** SURFACES OBERFLÄCHEN SURFACES




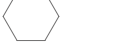

- **Strutturato Rettificato**  
Textured Rectified  
Strukturiert Rektifiziert  
Structuré Rectifié

Formati	Colori	Superfici		Scatole			Pallet			≠
		Naturale Rettificato Unpolished Rectified Matt Rektifiziert Naturel Rectifié	Lappato Rettificato Honed Rectified Geläpft Rektifiziert Adouci Rectifié	Pz/Sc Pcs/Box Stck/Kart. Pcs/Boîte	Mq/Sc Sqm/Box Qm/Kart. M²/Boîte	Kg/Sc Kg/Box Kg/Kart. Kg/Boîte	Colli Boxes Kart Boîtes	Mq Sqm Qm M²	Kg Kg Kg Kg	
<b>Silver Stone</b> <b>gres++</b>  LISCIO 60x120 - 24"x48"	Ivory Greige Silver Graphite	SS621R SS622R SS623R SS627R	SS621LR SS622LR SS623LR SS627LR	2	1,44	32	35	50,40	1130	10 mm
 LISCIO 20x120 - 24"x48"	Ivory Greige Silver Graphite	SS201R SS202R SS203R SS207R		5	1,20	26,5	30	36	805	10 mm
 LISCIO 45x90 - 18"x36"	Ivory Greige Silver Graphite	SS491R SS492R SS493R SS497R	SS491LR SS492LR SS493LR SS497LR	3	1,215	26,5	32	38,88	858	10 mm
 LISCIO 60x60 - 24"x24"	Ivory Greige Silver Graphite	SS601R SS602R SS603R SS607R	SS601LR SS602LR SS603LR SS607LR	4	1,44	31,5	30	43,20	955	10 mm
 LISCIO 30x60 - 12"x24"	Ivory Greige Silver Graphite	SS361R SS362R SS363R SS367R	SS361LR SS362LR SS363LR SS367LR	6	1,08	22,5	40	43,20	910	10 mm
 MOSAICO 5x5 - 2"x2" In fogli 30x30 da 36 pezzi. In 30x30 - 12"x12" sheets made up of 36 pieces. Auf Blatt 30x30 mit 36 Stück. Sur feuille tramee de 30x30 de 36 pièces.	Ivory Greige Silver Graphite	SS1MS5R SS2MS5R SS3MS5R SS7MS5R	SS1MS5L SS2MS5L SS3MS5L SS7MS5L	Sheets 11	0,99	24,09				
 7,5x60 - 3"x24" Battiscopa - Bullnose Sockel - Plinthe	Ivory Greige Silver Graphite	SSB601R SSB602R SSB603R SSB607R	SSB601L SSB602L SSB603L SSB607L	22	MI 13,2	22				
 (A) 30,2x60,4x5 - 12"x24"x2" Lineare ad Elle - L-shaped Element L-Form Element - Élément linéaire en "L"	Ivory Greige Silver Graphite	SS1GLR SS2GLR SS3GLR SS7GLR		4		20				
 (A) 30,2x60,4x5 - 12"x24"x2" DX Angolare ad Elle - L-shaped Corner Element L-Form Eckelement - Élément d'angle en "L"	Ivory Greige Silver Graphite	SS1GADR SS2GADR SS3GADR SS7GADR		2		11				
 (A) 30,2x60,4x5 - 12"x24"x2" SX Angolare ad Elle - L-shaped Corner Element L-Form Eckelement - Élément d'angle en "L"	Ivory Greige Silver Graphite	SS1GASR SS2GASR SS3GASR SS7GASR		2		11				

Formati	Colori	Superfici	Scatole			Pallet			≠	
			Pz/Sc Pcs/Box Stck/Kart. Pcs/Boîte	Mq/Sc Sqm/Box Qm/Kart. M²/Boîte	Kg/Sc Kg/Box Kg/Kart. Kg/Boîte	Colli Boxes Kart Boîtes	Mq Sqm Qm M²	Kg Kg Kg Kg		Spessore Thickness Stärke Epaisseur
<b>Silver Stone</b> <b>gres++</b>  RIGA DRITTA 60x60 - 24"x24"	Ivory Greige Silver Graphite	Esterno R11 Rettificato Outdoor R11 Rectified Aussenbereich R11 Rektifiziert Exterieur R11 Rectifié	SS61ER1 SS62ER1 SS63ER1 SS67ER1	4	1,44	31,5	30	43,20	955	10 mm
 RIGA DIAGO 60x60 - 24"x24"	Ivory Greige Silver Graphite		SS61ER2 SS62ER2 SS63ER2 SS67ER2	4	1,44	31,5	30	43,20	955	10 mm
 RIGA DRITTA 30x60 - 12"x24"	Ivory Greige Silver Graphite		SS31ER1 SS32ER1 SS33ER1 SS37ER1	6	1,08	22,5	40	43,20	910	10 mm
 RIGA DIAGO 30x60 - 12"x24"	Ivory Greige Silver Graphite		SS31ER2 SS32ER2 SS33ER2 SS37ER2	6	1,08	22,5	40	43,20	910	10 mm
 (A) 15x60x5 - 6"x24"x2" Lineare ad Elle - L-shaped Element L-Form Element - Élément linéaire en "L"	Ivory Greige Silver Graphite		SS1ELR SS2ELR SS3ELR SS7ELR	4	MI 2,4	10				

(A)  
Per una posa corretta è consigliata la tecnica del "buttering-floating" (doppia spalmatura): riempire bene con malta cementizia/collante il retro dell'elemento e la superficie di posa senza lasciare vuoti.  
For correct laying, the "buttering-floating" technique is recommended: fill the back of the element and the laying surface well with cement-based mortar or glue without leaving any gaps.  
Für die korrekte Verlegung wird die "Buttering-Floating-Technik" (zweifaches Auftragen) empfohlen: Die Rückseite des Elements und die zu verlegende Fläche gut mit Zementmörtel oder Kleber bestreichen, ohne freie Stellen zu lassen. - Pour une pose correcte, la technique du «buttering-floating» (double encollage) est conseillée: bien remplir de mortier à base de ciment/adhésif le dos de l'élément et la surface de pose sans laisser de vides.



Formati	Colori	Superfici	Scatole			Pallet			±	
Silver Stone gres++			Pz/Sc Pcs/Box Stck/Kart. Pcs/Boîte	Mq/Sc Sqm/Box Qm/Kart. M²/Boîte	Kg/Sc Kg/Box Kg/Kart. Kg/Boîte	Colli Boxes Kart Boîtes	Mq Sqm Qm M²	Kg Kg Kg Kg	Spessore Thickness Stärke Epaisseur	
 MIX 60x60 - 24"x24"	Ivory Greige Silver Graphite	Strutturato Rettificato Textured Rectified Strukturiert Rektifiziert Structuré Rectifié	SSM601R SSM602R SSM603R SSM607R	4	1,44	31,5	30	43,20	955	10 mm
 MIX 30x60 - 12"x24"	Ivory Greige Silver Graphite	Strutturato Rettificato Textured Rectified Strukturiert Rektifiziert Structuré Rectifié	SSM361R SSM362R SSM363R SSM367R	6	1,08	22,5	40	43,20	910	10 mm
 MIX 15x60 - 6"x24"	Ivory Greige Silver Graphite	Strutturato Rettificato Textured Rectified Strukturiert Rektifiziert Structuré Rectifié	SSM161R SSM162R SSM163R SSM167R	12	1,08	22,5	40	43,20	910	10 mm
 MIX ESAGONO 19x22 - 7½"x8½" Lato 11 - 4½"	Ivory Greige Silver Graphite	Strutturato Rettificato Textured Rectified Strukturiert Rektifiziert Structuré Rectifié	SSM1ES SSM2ES SSM3ES SSM7ES	5	0,157	3				
 MIX PROVENZALE 16x15 - 6½"x6"	Ivory Greige Silver Graphite	Strutturato Rettificato Textured Rectified Strukturiert Rektifiziert Structuré Rectifié	SSM1PR SSM2PR SSM3PR SSM7PR	20	0,24	4,5				

gres++  
HI-TECH INSIDE

Gres Porcellanato Porcelain Stoneware Feinsteinzeug Grès Cérame EN 14411:2012 ANNEX G GROUP Bia UGL



**LISCIO - RIGÀ**  
(V2): Piastrelle con lieve variazione di tono e disegno  
Tiles with slight shade and aspect variation  
Fliesen mit leicht unterschiedlichen Tonalitäten und Muster  
Carreaux avec faible différence de nuance et structure



**MIX**  
(V4): Piastrelle con variazione random di tono e disegno  
Tiles with random shade and aspect variation  
Fliesen mit zufällig unterschiedlichen Tonalitäten und Muster  
Carreaux avec différence aléatoire de nuance et structure



**Pavimento** - Floor coverings  
Bodenbeläge - Sol



**Rivestimento** - Wall coverings  
Wandbeläge - Faïence



**Residenziale** - Residential areas  
Wohngebiete - Zones résidentielles



**Esterno (Esterno R11)**  
Outdoor areas - Außenbereiche  
Espaces extérieurs



**Traffico leggero**  
Light traffic areas - Geringe Begehungsfrequenz  
Zones à trafic léger



**Traffico pesante (Naturale - Strutturato - Esterno R11)**  
Heavy traffic areas - Starke Begehungsfrequenz  
Zones à trafic intense



**Zone limitrofe a piscina (Esterno R11)**  
Swimming pool areas - Schwimmbadbereich  
Abords de piscines



**Rivestimenti esterni / Pareti ventilate**  
External cladding / Ventilated facade - Außenverkleidung / Hinterlüftete Fassaden  
Murs extérieurs / Façades ventilées

DIGITAL  
HD 3D

**Fino a 100 grafiche differenti**  
Up to 100 different graphics  
Jusqu'à 100 graphiques différentes  
Bis zu 100 verschiedene Grafiken

WE  
FEEL  
GREEN

**> 30%**  
**Elevato contenuto di materiale riciclato**  
High content of recycled material  
Hoher Anteil an Recyclierten Rohstoffen  
Haute teneur en matériaux recyclés

Pag. 629

eco+  
THE GREEN SOUL OF PORCELAIN STONWARE



**Resistente al gelo**



**Naturale Strutturato**



**Esterno R11**



**Esterno R11**



**Naturale Strutturato Esterno R11**  
DRY: > 0,40  
WET: > 0,40



**Naturale**  
WET: ≥ 0.42



**Strutturato**  
WET: ≥ 0.42

Silver Mix 60x60 - 24"x24" Strutturato Rettificato  
Silver Mix 30x60 - 12"x24" Strutturato Rettificato  
Silver Mix 15x60 - 6"x24" Strutturato Rettificato